



WOMEN'S SOCCER

WVU ATHLETIC COMMUNICATIONS
PO Box 877 | Morgantown, WV 26507-0877
304.293.2821

WVUSPORTS.com

2016 Women's Soccer Schedule

| Date | Opponent (TV) | Time |
|----------|------------------------------|--------------|
| Aug. 19 | at No. 2 Penn State ! (BTN) | T, 1-1 (2ot) |
| Aug. 21 | vs. Buffalo ! | W, 2-0 |
| Aug. 26 | No. 8 Clemson | W, 1-0 |
| Aug. 28 | Saint Francis | W, 3-1 |
| Sept. 1 | Purdue | W, 2-0 |
| Sept. 4 | No. 19 Ohio State | W, 2-1 |
| Sept. 9 | at No. 5 Duke (WatchESPN) | W, 3-1 |
| Sept. 16 | Princeton | W, 3-0 |
| Sept. 18 | No. 9 Georgetown | L, 0-1 (2OT) |
| Sept. 23 | at Richmond (WTVR Digital) | W, 4-1 |
| Sept. 30 | Baylor* | W, 2-0 |
| Oct. 2 | No. 23 Oklahoma* (ESPNU) | W, 2-0 |
| Oct. 7 | at Kansas* | W, 1-0 |
| Oct. 9 | at Iowa State* | 2 p.m. |
| Oct. 14 | Texas Tech* (ESPNU) | 6 p.m. |
| Oct. 21 | at TCU* | 8 p.m. |
| Oct. 23 | at Texas* (FSN) | 6 p.m. |
| Oct. 28 | Oklahoma State* | 7 p.m. |
| Nov. 2-6 | Big 12 Soccer Championship ^ | TBA |

! - Penn State Invitational (University Park, Pa.)
* - Big 12 opponent
^ - Big 12 Soccer Championship (Kansas City, Mo.)
All times Eastern and subject to change

No. 2 West Virginia at Iowa State

Sunday, Oct. 9 • 2 p.m. ET • Cyclone Sports Complex (1,500) • Ames, Iowa
Links for Live Stats and Video Stream: WVUsports.com



(11-1-1, 3-0)



(7-4-1, 1-2-1)

The Kick Off

- The No. 2-ranked West Virginia University women's soccer team concludes its Big 12 Conference road swing at Iowa State on Sunday, Oct. 9, with first kick from Cyclone Sports Complex set for 2 p.m. ET.
- The Mountaineers opened the weekend with a 1-0 victory at Kansas on Oct. 7 and now sit alone at the top of the Big 12 Conference rankings.
- WVU is 13-1-2 in all-time road Big 12 matches, with its only loss a 2-0 decision at No. 7 Texas Tech on Oct. 27, 2013; the defeat is the squad's lone loss in Big 12 play since joining the conference in 2012.
- WVU has posted a shutout in six of its last eight Big 12 road matches. The team earned a clean sheet in each 2014 road conference match.
- WVU has won the Big 12 Conference regular-season crown each year since joining the league in 2012. The Mountaineers are the only team in conference history to win four consecutive outright championships. WVU is 30-1-3 in Big 12 play.
- Since dropping a 1-0-2OT decision to No. 9 Georgetown on Sept. 18, the WVU defense has posted a shutout in seven of eight halves played, with the only goal allowed a penalty kick at Richmond on Sept. 23. WVU has posted seven shutouts in 2016 and allowed just six opponent goals, the fourth-fewest allowed in the NCAA (thru games as of Oct. 6).
- Junior forward Michaela Abam paces the Mountaineers with seven goals. She shows 27 career goals and needs one more to break onto the program's all-time career goals list.
- Coach Nikki Izzo-Brown earned her 300th career victory with a 2-0 win over Buffalo on Aug. 21. She needs three wins to secure her 300th victory at WVU.

West Virginia vs. Iowa State

- WVU is 4-0 all-time against the Cyclones.
- The Mountaineers have posted three straight shutouts against ISU and have outscored the Cyclones 12-2.

The Last Meeting

- No. 2 WVU closed its home regular-season slate with a 4-0 win over ISU on Oct. 18, 2015, at Dick Dlesk Soccer Stadium.
- Four different Mountaineers tallied goals, including the first career score for Heather Kaleiohi.
- WVU placed 12 of 38 shots on-goal. Defensively, the Mountaineers held ISU to two shots and denied the team a corner kick. Hannah Steadman made two saves for the team's 14th shutout of the season.

The Last Meeting in Ames

- No. 13 WVU netted three second-half goals and defeated ISU, 3-0, on Oct. 17, 2014. The Mountaineers held the Cyclones to just two shots, and Hannah Steadman made one save for the win. WVU denied ISU a corner kick.
- All-American Kate Schwindel netted the game-winner in the 50th minute.

A Look at the Cyclones

- ISU played to a 0-0 double-overtime tie against TCU on Oct. 7, at the Cyclone Sports Complex.
- Junior goalkeeper Lindsey Hendon made eight saves for her school-record tying seventh clean sheet of the year. She shows a 0.93 GAA this year and has made 53 saves in 12 starts between the posts.
- Sophomore midfielder Emily Steil paces ISU with seven points (1 G, 5 A). Four different Cyclones have scored two goals this season.

Tracking the Mountaineers

Media Services

• The WVU athletic communications office will be available throughout the 2016 women's soccer season to accommodate any media requests. Members of the media wishing to interview a player or member of the coaching staff during the week should contact women's soccer SID Shannon McNamara at (304) 293-2821 or by email at Shannon.McNamara@mail.wvu.edu.

Game Services

• The WVU athletic communications staff will be at your service throughout the match. Press seating is located in the media booth of the Bill Maloney Press Box. Internet access is available for working media members.

WVUsports.com

• WVUsports.com is the place for media and fans to go for the latest news on Mountaineer women's soccer. Streamed audio and video broadcasts will be available on WVU's official athletic website, along with live stats to keep track of every score and save. Game notes are made available in PDF format one day prior to gameday.

Big 12 Digital Media

• Fans can track every Big 12 soccer match throughout the season with the live in-game scoreboard at Big12Sports.com. You also can follow the Big 12 on Twitter (@Big12Conference), Facebook (facebook.com/Big12), Instagram (@Big12Conference) and YouTube (youtube.com/big12conference).



@WVUWomensSoccer
@WVUIzzoBrown
@WVUSports



/WVUWomensSoccer



@WVUWomensSoccer



@WVUWomensSoccer

NCAA and Big 12 Statistical Rankings

Team

- Scoring Off.: 2.0 (47, 3)
- Points Avg.: 6.0 (38, 4)
- GAA: 0.45 (12, 1)
- Shutout Pct.: 0.54 (42, 1)
- Save Pct.: 0.846 (52, 2)



Individual Leaders

- Goals/G: M. Abam, 0.54 (77, 2)
- Assists/G: C. Portillo, 0.38 (79, 4)
- Points/G: M. Abam, 1.23 (84, 2)
- GWG: H. Abraham, 3.0 (39, 3)
- GAA: R. Foster, 0.39 (10, 1)

Team

- Scoring Off.: 1.08 (217, 9)
- Points Avg.: 3.0 (218, 9)
- GAA: 1.13 (161, 8)
- Shutout Pct.: 0.58 (33, 1)
- Save Pct.: 0.803 (151, 3)



Individual Leaders

- Goals/G: N/A
- Assists/G: E. Steil, 0.42 (61, 3)
- Points/G: N/A
- GWG: T. Alexander, 2.0 (120, 5)
- GAA: L. Hendon, 0.92 (115, 6)



Head Coach Nikki Izzo-Brown

- Total Years Coaching: 22nd Season
- At WVU: 21st Season
- Career Record: 310-107-45 (.720)
- Record at WVU: 297-102-45 (.720)

Coaching Experience

- West Virginia Head Coach (1996-present)
- West Virginia Wesleyan (1994)

Career Coaching Highlights

- Only coach in Mountaineer women's soccer history
- Five-time NSCAA Regional Coach of the Year
- Six-time conference coach of the year
- Four-time reigning Big 12 Coach of the Year
- Led WVU to 16 straight NCAA appearances
- Has won 14 conference titles with the Mountaineers, including nine in the last six seasons
- Coached 15 players who went on to play professionally
- Coached 20 All-Americans
- Coached 14 MAC Hermann Trophy Candidates
- Coached 18 Academic All-Americans
- Coached 18 conference players of the year
- Coached two 2016 Rio Summer Olympic Bronze medalists
- Coached two FIFA Women's World Cup participants, including the 2015 Best Young Player honoree (Kadeisha Buchanan)
- Women's soccer won school's first Big 12 championship in 2012; only WVU program to win multiple Big East and Big 12 Championship titles
- WVU has defeated a top-10 opponent in each of the last 12 seasons
- Has never had a losing season as a head coach
- Has led WVU to 17 straight 10-plus win seasons

With U.S. Women's National Teams

- Assistant coach at the 2012 training camps with the U.S. U-18, U-20 and U-23 squads
- Assistant coach for the 2007 U.S. U-20 National Team

Playing Experience

- Four year All-American at Rochester (1982-92)

Education

Rochester, 1993

- Bachelor's degree (psychology)

West Virginia Wesleyan, 1994

- Master's degree (business administration)

Mountaineers At A Glance

Women's Soccer Coaching Staff and History

Head Coach: Nikki Izzo-Brown (Rochester '93)

Record at WVU: 297-102-45 (21 years)

Career Record: 310-107-45 (22 years)

Associate Head Coach: Lisa Stoia (10th season)

Assistant Coach: Marisa Kanela (Seventh season)

All-Time W. Soccer Record (Years): 297-102-45 (21 years)

Founded: 1995 (first season - 1996)

NCAA Tournament Appearances (Last): 16 straight (2015)

Highest NCAA Appearance (Last): Elite Eight (2015)

Big 12 Conference Championships (last): 6 (2015)

Big East Conference Championships (last): 8 (2011)

Colors: Old Gold and Blue

Nickname: Mountaineers

Facility (capacity): Dick Dlesk Soccer Stadium (1,650)

University Information

Location: Morgantown, W.Va.

Enrollment: 31, 514

Founded: 1867

President: E. Gordon Gee

Director of Athletics: Shane Lyons

Web Address: WVUsports.com

Mountaineer Rosters

Alphabetical

| # | Name | Yr. | Pos. | Ht. | Hometown |
|----|-----------------------|-----|------|------|-----------------------------|
| 5 | Michaela Abam | Jr. | F | 5-7 | Houston, Texas |
| 20 | Hannah Abraham | So. | F/D | 5-5 | Fairchance, Pa. |
| 24 | Carly Black | Sr. | D | 5-8 | Horsham, Pa. |
| 88 | Kadeisha Buchanan | Sr. | D | 5-7 | Brampton, Ontario |
| 28 | Amanda Burns | Fr. | M | 5-0 | Clarence, N.Y. |
| 19 | Laurel Carpenter | So. | M | 5-9 | McMurray, Pa. |
| 7 | Grace Cutler | So. | F | 5-9 | Fort Collins, Colo. |
| 14 | Patricia Fernandez | So. | M | 5-0 | Pearland, Texas |
| 26 | Vanessa Flores | So. | M | 5-7 | Baytown, Texas |
| 25 | Rylee Foster | Fr. | GK | 5-9 | Cambridge, Ontario |
| 2 | Jade Gentile | Fr. | M/F | 5-4 | Baldwinsville, N.Y. |
| 99 | Sh'Nia Gordon | So. | F | 5-7 | Ocklawaha, Fla. |
| 6 | Heather Kaleiohi | Jr. | F | 5-7 | San Diego, Calif. |
| 9 | Ashley Lawrence | Sr. | M | 5-6 | Toronto, Ontario |
| 22 | Alli Magaletta | Jr. | M | 5-6 | Chesterfield, Mo. |
| 16 | Easter Mayi Kith | So. | D | 5-6 | Quebec City, Quebec |
| 3 | Brooke Myers | Fr. | GK | 5-11 | Middletown, Pa. |
| 1 | Michelle Newhouse | Jr. | GK | 5-8 | Pinch, W.Va. |
| 97 | Dalanda Ouendeno | So. | D | 5-5 | Paris, France |
| 11 | Amandine Pierre-Louis | Jr. | D | 5-7 | Montreal, Quebec |
| 10 | Carla Portillo | Jr. | M | 5-1 | Mississauga, Ontario |
| 13 | Amanda Saymon | So. | M | 5-5 | Bridgeport, W.Va. |
| 4 | Bianca St. Georges | So. | D | 5-5 | St. Felix de Valois, Quebec |
| 12 | Macy Stalnaker | So. | F/M | 5-4 | Butler, Pa. |
| 18 | Ashley Woolpert | Sr. | F/M | 5-7 | Springboro, Ohio |

Numerical

| # | Name | Pos. | Ht. | Yr. | Hometown |
|----|-----------------------|------|-----|------|-----------------------------|
| 1 | Michelle Newhouse | Jr. | GK | 5-8 | Pinch, W.Va. |
| 2 | Jade Gentile | Fr. | M/F | 5-4 | Baldwinsville, N.Y. |
| 3 | Brooke Myers | Fr. | GK | 5-11 | Middletown, Pa. |
| 4 | Bianca St. Georges | So. | D | 5-5 | St. Felix de Valois, Quebec |
| 5 | Michaela Abam | Jr. | F | 5-7 | Houston, Texas |
| 6 | Heather Kaleiohi | Jr. | F | 5-7 | San Diego, Calif. |
| 7 | Grace Cutler | So. | F | 5-9 | Fort Collins, Colo. |
| 9 | Ashley Lawrence | Sr. | M | 5-6 | Toronto, Ontario |
| 10 | Carla Portillo | Jr. | M | 5-1 | Mississauga, Ontario |
| 11 | Amandine Pierre-Louis | Jr. | D | 5-7 | Montreal, Quebec |
| 12 | Macy Stalnaker | So. | F/M | 5-4 | Butler, Pa. |
| 13 | Amanda Saymon | So. | M | 5-5 | Bridgeport, W.Va. |
| 14 | Patricia Fernandez | So. | M | 5-0 | Pearland, Texas |
| 16 | Easter Mayi Kith | So. | D | 5-6 | Quebec City, Quebec |
| 18 | Ashley Woolpert | Sr. | F/M | 5-7 | Springboro, Ohio |
| 19 | Laurel Carpenter | So. | M | 5-9 | McMurray, Pa. |
| 20 | Hannah Abraham | So. | F/D | 5-5 | Fairchance, Pa. |
| 22 | Alli Magaletta | Jr. | M | 5-6 | Chesterfield, Mo. |
| 24 | Carly Black | Sr. | D | 5-8 | Horsham, Pa. |
| 25 | Rylee Foster | Fr. | GK | 5-9 | Cambridge, Ontario |
| 26 | Vanessa Flores | So. | M | 5-7 | Baytown, Texas |
| 28 | Amanda Burns | Fr. | M | 5-0 | Clarence, N.Y. |
| 88 | Kadeisha Buchanan | Sr. | D | 5-7 | Brampton, Ontario |
| 97 | Dalanda Ouendeno | So. | D | 5-5 | Paris, France |
| 99 | Sh'Nia Gordon | So. | F | 5-7 | Ocklawaha, Fla. |

Pronunciation Guide

| | |
|-------------------|--------------|
| Michaela Abam | uh-BAM |
| Kadeisha Buchanan | kuh-Deesh-uh |
| Rylee Foster | Rye-lee |
| Jade Gentile | gen-til-E |
| Sh'Nia Gordon | shh Ny-ah |
| Heather Kaleiohi | cal-E-oh-HE |
| Alli Magaletta | MAG-a-letta |

| | |
|-----------------------|-------------|
| Easter Mayi Kith | My-ah Keith |
| Dalanda Ouendeno | when-deno |
| Amandine Pierre-Louis | ama-Dine |
| Carla Portillo | poor-TEE-yo |
| Bianca St. Georges | St. George |

| | |
|---------------------|-----------|
| Coach Marisa Kanela | kuh-nella |
| Coach Lisa Stoia | stoy-uh |

National Rankings (as of 10/4/16)

| NCAA Poll | | | TopDrawerSoccer.com Top 25 | | | Soccer America Top 25 | | | Hero Sports Rankings | | |
|-----------|----------------------|---------------|----------------------------|----------------------|---------------|-----------------------|----------------------|---------------|----------------------|----------------------|---------------|
| Rank | Team | Record | Rank | Team | Record | Rank | Team | Record | Rank | Team | Record |
| 1 | Stanford | 10-0-1 | 1 | Stanford | 10-0-1 | 1 | Stanford | 10-0-1 | 1 | USC | 9-2 |
| 2 | Florida State | 9-1-1 | 2 | West Virginia | 10-1-1 | 2 | Florida State | 9-1-1 | 2 | Stanford | 10-0-1 |
| 3 | West Virginia | 10-1-1 | 3 | BYU | 9-1-1 | 3 | Georgetown | 9-1-1 | 3 | BYU | 9-1-1 |
| 4 | South Carolina | 11-0-1 | 4 | Florida State | 9-1-1 | 4 | West Virginia | 10-1-1 | 4 | South Carolina | 11-0-1 |
| 5 | BYU | 10-1-1 | 5 | USC | 9-2 | 5 | South Carolina | 11-0-1 | 5 | Virginia | 8-2-2 |
| 6 | Georgetown | 9-1-1 | 6 | Duke | 8-2-2 | 6 | USC | 9-2 | 6 | UCLA | 9-2 |
| 7 | USC | 9-2 | 7 | UCLA | 9-2 | 7 | UCLA | 9-2 | 7 | West Virginia | 10-1-1 |
| 8 | Virginia | 8-2-2 | 8 | Virginia | 8-2-2 | 8 | BYU | 9-1-1 | 8 | Clemson | 8-2-2 |
| 9 | Duke | 8-2-2 | 9 | Arkansas | 12-1 | 9 | Arkansas | 12-1 | 9 | Georgetown | 9-1-1 |
| 10 | UCLA | 9-2 | 10 | South Carolina | 11-0-1 | 10 | North Carolina | 6-2-3 | 10 | Duke | 8-2-2 |
| 12 | Arkansas | 12-1 | 11 | Georgetown | 9-1-1 | 11 | Virginia | 8-2-2 | 11 | Florida | 8-3 |
| 13 | Penn State | 8-2-2 | 12 | Clemson | 8-2-2 | 12 | Duke | 8-2-2 | 12 | North Carolina | 6-2-3 |
| 14 | California | 10-2 | 13 | North Carolina | 6-2-3 | 13 | Penn State | 8-2-2 | 13 | Penn State | 8-2-2 |
| 15 | North Carolina | 6-2-3 | 14 | Florida | 8-3 | 14 | Notre Dame | 8-1-3 | 14 | California | 10-2 |
| 16 | Florida | 8-3 | 15 | Connecticut | 10-2 | 15 | Clemson | 8-2-2 | 15 | Minnesota | 9-3-1 |
| 17 | Minnesota | 9-3-1 | 16 | Michigan | 9-1-1 | 16 | Connecticut | 10-2 | 16 | Notre Dame | 8-1-3 |
| 18 | Auburn | 8-4 | 17 | Penn State | 8-2-2 | 17 | Michigan | 9-1-1 | 17 | Oklahoma | 10-3-1 |
| 19 | Michigan | 9-1-1 | 18 | California | 10-2 | 18 | Auburn | 7-4 | 18 | Utah | 7-2-2 |
| 20 | Notre Dame | 8-1-3 | 19 | Notre Dame | 8-1-3 | 19 | Florida | 9-3 | 19 | Michigan | 9-1-1 |
| 21 | Connecticut | 10-2 | 20 | Minnesota | 9-3-1 | 20 | California | 10-2 | 20 | Long Beach State | 5-5-2 |
| 22 | Oklahoma | 10-3-1 | 21 | USF | 9-1 | 21 | Louisville | 7-3-2 | 21 | NC State | 9-3 |
| 23 | USF | 9-1 | 22 | Rutgers | 8-2-2 | 22 | Rutgers | 8-2-2 | 22 | Auburn | 8-4 |
| 24 | Rutgers | 8-2-2 | 23 | Princeton | 8-1-1 | 23 | Minnesota | 9-3-1 | 23 | Florida State | 9-1-1 |
| 25 | Pepperdine | 6-3-3 | 24 | Oklahoma | 10-3-1 | 24 | NC State | 9-3 | 24 | Santa Clara | 3-5-4 |
| | | | 25 | Northwestern | 10-1-1 | 25 | Oklahoma | 10-3-1 | 25 | Loyola Marymount | 7-2-3 |

Big 12 Standings (as of 10/8/16)

| | Big 12 | | Pts. | Overall | |
|----------------------|------------|-----------|----------|---------------|-----------|
| | W-L | Streak | | W-L | Streak |
| West Virginia | 3-0 | W3 | 9 | 11-1-1 | W4 |
| Kansas | 3-1 | L1 | 9 | 8-4-2 | L1 |
| Baylor | 2-1-1 | W1 | 7 | 9-4-1 | W1 |
| Oklahoma | 3-2 | L2 | 9 | 10-4-1 | L2 |
| Oklahoma State | 2-2 | W2 | 6 | 7-5-2 | W2 |
| Iowa State | 1-2-1 | -- | 4 | 7-4-1 | -- |
| Texas Tech | 1-2 | L1 | 3 | 8-3-2 | L1 |
| TCU | 0-2-1 | -- | 1 | 8-2-2 | -- |
| Texas | 0-3-1 | L3 | 1 | 7-6-1 | W1 |

Tracking the Mountaineers in the Polls

| | NCAA | TDS.com | SA | HS | RPI |
|-----------|------|---------|----|----|-----|
| Preseason | 6 | 5 | -- | 5 | -- |
| Week 1 | 7 | 6 | 4 | 8 | -- |
| Week 2 | 4 | 4 | 3 | 7 | -- |
| Week 3 | 4 | 4 | 2 | 7 | -- |
| Week 4 | 2 | 1 | 1 | 11 | -- |
| Week 5 | 5 | 4 | 5 | 11 | 4 |
| Week 6 | 4 | 3 | 4 | 11 | 5 |
| Week 7 | 3 | 2 | 4 | 7 | 2 |

NCAA: National Soccer Coaches Association of America
TDS.com: TopDrawerSoccer.com

SA: Soccer America
HS: Hero Sports



BIG 12 CONFERENCE

The Last Time Out: The No. 2 Mountaineers opened the weekend with a resounding 1-0 victory over Kansas on Oct. 7 at Rock Chalk Park. WVU made the most of its eighth corner kick of the night, as junior Alli Magaletta headed it in toward the far left post in the 38th minute for her second goal and second game-winner of the season. Senior Ashley Lawrence assisted on the score, her fourth helper of the year. The Mountaineers finished with a season-high 14 corner kicks while holding KU to zero opportunities; the Jayhawks were the second opponent this season to not earn a chance. WVU finished with an 18-5 edge in shots and forced KU into three saves. Rylee Foster finished with two saves for her fifth shutout of the season.

Challenging Slate: Year after year, coach Nikki Izzo-Brown challenges the Mountaineers with one of the nation's hardest schedules, and 2016 is no different. WVU faced one ranked opponent in six of the first seven weeks of the season, including one ranked team in each of the first five weeks, marking the first time since at least the 2005 season the Mountaineers kicked against a ranked opponent in five straight weeks.

In total, WVU will face seven teams that qualified for the 2015 NCAA Tournament. The Mountaineers have already earned a 1-1 (2OT) draw at reigning National Champion Penn State on Aug. 19 and a 3-1 win at runner-up Duke on Sept. 9. WVU is 4-1-1 against ranked teams this season, 2-1-1 against top-10 opponents and 4-0-1 against teams from the Big Ten Conference and Atlantic Coast Conference.

WVU's 2016 slate is the 13th-toughest schedule in the NCAA through games as of Oct. 6, with the Mountaineers' past opposition showing a 0.664 win percentage. The team's schedule is the sixth-toughest slate in the NCAA based on the 0.663 win percentage of the team's past and future opposition.

Picked to Win Again: The Mountaineers were unanimously picked No. 1 by the league coaches in the 2016 Big 12 Conference Soccer Preseason Poll. It marked the fourth straight season the conference coaches selected WVU to win the Big 12 crown; the team was not chosen in 2012, its first season in the league. WVU is the only current conference team to be tabbed No. 1 four straight seasons and the first squad since Texas A&M (2004-07) to earn a conference-best four straight preseason No. 1 rankings.

The Best of the Big 12: A conference-best four Mountaineers were named to the Preseason All-Big 12 Soccer Team: unanimous selections Kadeisha Buchanan, Ashley Lawrence and Michaela Abam, and Carla Portillo.

We Are the Champions! (x4): With a 2-1 overtime victory at Oklahoma State on Oct. 23, the Mountaineers clinched the 2015 Big 12 Conference regular-season title, their fourth straight. WVU has won the title each season since joining the Big 12 in 2012, and the team is the only program to win four straight outright championships; Texas A&M won four straight titles from 2004-07, but its first was not an outright win. Also the 2015 Big 12 preseason favorite, WVU's accomplishment marked the ninth time in Big 12 history the preseason favorite in the coaches poll also won the title. WVU owns a 30-1-3 all-time record in Big 12 play is unbeaten at DDSS.

Dating back to its days in the Big East Conference, WVU has won five straight conference regular-season crowns and nine since its first title in 2002. WVU has won nine regular season and championship conference titles in six seasons and 14 since 2002.

| Mountaineer Conference Title Count (14) | |
|---|--|
| 2015 | Big 12 regular-season title |
| 2014 | Big 12 Soccer Championship title Big 12 regular-season title |
| 2013 | Big 12 Soccer Championship title Big 12 regular-season title |
| 2012 | Big 12 regular-season title |
| 2011 | Big East Soccer Tournament title Big East American Division title |
| 2010 | Big East Soccer Tournament title |
| 2008 | Big East American Division title |
| 2007 | Big East Soccer Tournament title Big East American Division title |
| 2006 | Big East American Division title |
| 2002 | Big East Mid-Atlantic Division title |

Hermann Hopefuls Again: For the second straight season, defender Kadeisha Buchanan and midfielder Ashley Lawrence, both seniors, were named to the MAC Hermann Trophy Watch List. College soccer's version of the Heisman Trophy, the award represents the highest level of individual achievement in the sport.

This year's recognition is the third straight for Buchanan and the second straight for Lawrence. It is the fourth time since 2007 WVU has had two student-athletes land on the first list of the season. Nine different Mountaineers have been named to the initial Watch List 14 times since 2003. WVU also has had six semifinalists, including Buchanan and Lawrence. Buchanan was the program's first finalist in 2015 and is the only finalist to return to the list this year.

Mountaineers Win Bronze! For the second straight summer, seniors Kadeisha Buchanan and Ashley Lawrence gained experience with Canada's National Team on the world's biggest stage, as the duo helped the nation claim Bronze at the 2016 Rio Summer Olympics. Lawrence earned an assist on Canada's first goal in the team's 2-1 win over Brazil in the Bronze medal game.

The first WVU women's soccer players named to an Olympic roster, Buchanan and Lawrence also were the first WVU women's soccer players named to a World Cup roster and started all five of Canada's matches at the 2015 FIFA Women's World Cup. Buchanan was named the Best Young Player, landed on the FIFA Women's World Cup Canada 2015 All-Star Squad and was featured on a Canadian commemorative stamp. Lawrence scored Canada's lone goal in a 1-1 draw against Netherland in Group A play; the score helped advance Canada to the knockout stage for only the second time in six tries.

Buchanan, Lawrence Have CLASS: Kadeisha Buchanan and Ashley Lawrence are two of 30 candidates for the 2016 Senior CLASS Award. An acronym for Celebrating Loyalty and Achievement for Staying in School, the Senior CLASS Award focuses on the total student-athlete and encourages students to use their platform in athletics to make a positive impact as leaders in their communities.

WVU is one of two schools with two candidates. The duo push the program's candidate total to five in the last four seasons.

O Canada! Seven Mountaineers on the 2016 roster hail from Canada: Kadeisha Buchanan (Ontario), Rylee Foster (Ontario), Ashley Lawrence (Ontario), Easter Mayi Kith (Quebec), Amandine Pierre-Louis (Quebec), Carla Portillo (Ontario) and Bianca St. Georges (Quebec).

For Starters: Seven Mountaineers have earned their first career starts this season - midfielders Patricia Fernandez, Vanessa Flores and Alli Magaletta, defenders Macy Stalaker and Dalanda Ouendeno, and goalkeepers Rylee Foster and Michelle Newhouse. In total, WVU has 17 players with at least one career start to their name.

Leading the Way: Three Mountaineer seniors were named team captains for the 2016 season: Carly Black, Kadeisha Buchanan and Ashley Lawrence. Buchanan also was a captain in 2015. Captains are voted on by team members.

Fast Starts: The Mountaineers are off to one of their best starts in the program's 21-year history, as the team hit the 10-win mark in just 12 games with a 2-0 win over Oklahoma on Oct. 2. WVU now shows an 11-1-1 record. Only the 2015 squad put together a better start, earning season win No. 10 in its 11th match played and sitting at 11-1 through 12 matches.

This marks the fourth time in program history the Mountaineers have hit the 10-win mark as of game 12. The 2002 team also showed a 10-1-1 record through 12 games played, while the 2003 squad sat at 10-2 through 12 games played.

Big Benchmark Hit: Coach Nikki Izzo-Brown played a big role in making sure the Mountaineers' 2016 season-opening weekend was memorable, as the team's 2-0 victory over Buffalo on Aug. 21, at the Penn State Invitational, was career win No. 300 for the 21-year WVU women's soccer head coach.

Izzo-Brown's 22-year coaching record now stands at 310-107-45 (.720). Before founding the WVU women's soccer program in 1995, she spent one season at West Virginia Wesleyan in 1994. Izzo-Brown has posted a winning record in all 21 seasons with the Mountaineers.

WVU's 2-0 win against No. 23 Oklahoma on Oct. 2 was the squad's 10th victory of the season. Izzo-Brown has led WVU to 10 wins or more each year but 1999. WVU earned a program-record 19 victories in 2015.

The Next 250: In just 21 seasons, the WVU women's soccer team has earned 297 program wins, an average of 14 victories per season; the team needs three wins to earn program victory No. 300. The Mountaineers scored program win No. 250 with their 1-0 victory over Baylor at the 2013 Big 12 Soccer Championship semifinal on Nov. 8, in Kansas City, Missouri. WVU earned its 275th program victory with a 1-0 overtime win against Buffalo on Sept. 18, 2015, at Dick Dlesk Soccer Stadium.

Catch Us When You Can: Four of the Mountaineers' regular-season contests will be broadcast for national audiences: at Penn State on Aug. 19 (Big Ten Network), home against Oklahoma on Oct. 2 and Texas Tech on Oct. 14 (ESPNU), and at Texas on Oct. 23 (FOX Sports Network). WVU is 1-0-1 in nationally televised games in 2016, having earned a 1-1 2OT draw at No. 2 PSU on Aug. 19 and a 2-0 win over OU on Oct. 2. The scheduled television games are the most for WVU since the squad was featured in seven televised matches in 2009.

International Experience: When they are not competing with WVU, several Mountaineers currently compete with or have competed with the top international teams:

- Michaela Abam (Jr., F)** - United States U-19 National Team (2014-15)
- Kadeisha Buchanan (Sr., D)** - Full Canadian Women's National Team (2012-present)
- Rylee Foster (Fr., GK)** - Canadian U-17, U-20 Teams (2013-present)
- Vanessa Flores (So., M)** - Mexican U-20 National Team (2015-present)
- Ashley Lawrence (Sr., M)** - Full Canadian Women's National Team (2012-present)
- Easther Mayi Kith (So., D)** - Canadian U-17 National Team (2014-15)
- Amandine Pierre-Louis (Jr., D)** - Canadian U-20 National Team (2014)
- Carla Portillo (Jr., M)** - Canadian U-20 National Team Pool (2014-15)
- Bianca St. Georges (So., D)** - Canadian U-17, U-20 Teams (2014-present)



WVU Scoring Breakdown

| | | |
|-------------------|-------|-------------|
| 1st-15th minute: | WVU 2 | Opponents 0 |
| 16th-30th minute: | WVU 3 | Opponents 1 |
| 31st-45th minute: | WVU 5 | Opponents 0 |
| 46th-60th minute: | WVU 6 | Opponents 2 |
| 61st-75th minute: | WVU 3 | Opponents 2 |
| 76th-90th minute: | WVU 7 | Opponents 0 |
| First Overtime: | WVU 0 | Opponents 0 |
| Second Overtime: | WVU 0 | Opponents 1 |

WVU Win/Loss/Tie Breakdown

| | Wins (11) | Losses (1) | Ties (1) |
|-----------------------|-------------|------------|-----------|
| Goals (avg.): | 25 (2.27) | 0 (0.0) | 1 (1.0) |
| Assists (avg.): | 23 (2.09) | 0 (0.0) | 2 (2.0) |
| Shots (avg.): | 249 (22.64) | 23 (23.0) | 14 (14.0) |
| Shots on goal (avg.): | 97 (8.82) | 8 (8.0) | 7 (7.0) |
| Corner kicks (avg.): | 87 (7.91) | 9 (9.0) | 4 (4.0) |
| Yellow/Red cards: | 4/0 | 0/0 | 1/0 |
| Saves (avg.): | 10 (0.91) | 3 (3.0) | 9 (9.0) |
| Allowed 0-1 goals: | 11 | 1 | 1 |
| Allowed 2+ goals: | 0 | 0 | 0 |

WVU Game-Winning Goals By Period

| | |
|--------------|---|
| First Half: | 5 |
| Second Half: | 6 |
| Overtime: | 0 |

NCAA Tournament Appearance Streak

| | |
|----------------------|-----------|
| North Carolina | 34 |
| Notre Dame | 23 |
| Virginia | 22 |
| Penn State* | 21 |
| Texas A&M | 21 |
| Stanford | 18 |
| West Virginia | 16 |
| Florida State | 16 |
| Florida | 13 |
| California | 12 |

*Denotes 2016 Opponent



Sweet 16: The Mountaineers' bid to the 2015 NCAA Tournament was their 16th straight, the seventh-longest active streak in the nation. WVU has advanced to the round of 16 four times and the quarterfinals twice.

LAST TIME..... A WVU Team (Single Game)

Defeated Ranked Opponent vs. No. 23 Oklahoma, 2-0 (10/2/16)
 Defeated Ranked Opponent/Home vs. No. 23 Oklahoma, 2-0 (10/2/16)
 Defeated Ranked Opponent/Away at No. 5 Duke, 3-1 (9/9/16)
 Defeated Ranked Opponent/Neutral vs. No. 1 Stanford, 1-0 (8/26/12)
 (at Penn State Invitational, University Park, Pa.)

Defeated Opponent in 1OT at Oklahoma State, 2-1 (10/23/15)
 Defeated Opponent in 2OT vs. Oklahoma State, 2-1 (10/24/14)
 Lost to Opponent in 1OT vs. Notre Dame, 3-2 (10/2/09)
 Lost to Opponent in 2OT vs. No. 9 Georgetown, 1-0 (9/18/16)
 Ended Match in Tie at Penn State, 1-1 (2OT) (8/19/16)
 Ended Match in Scoreless Tie at Oklahoma, 0-0 (2OT) (10/9/15)
 Ended Match in Penalty Kicks vs. Georgetown, T 0-0 (2OT), lost 4-3 (11/15/14)

Won Five-Consecutive Matches 7 wins (Aug. 21-Sept. 16, 2016)
 Lost Five-Consecutive Matches No instances on record

Four Goals at Richmond, W 4-1 (9/23/16)
 Five Goals vs. Loyola Marymount, W 5-2 (11/22/15)
 Six Goals vs. Kansas, W 6-0 (10/16/15)
 Seven Goals vs. Villanova, W 8-0 (9/6/15)
 Eight Goals vs. Villanova, W 8-0 (9/6/15)
 Four Assists vs. Oklahoma, W 2-0 (10/2/16)
 Five Assists 6, vs. Loyola Marymount, W 5-2 (11/22/15)
 Six Assists vs. Loyola Marymount, W 5-2 (11/22/15)
 Seven Assists 8, vs. Villanova, W 8-0 (9/6/15)
 Eight Assists vs. Villanova, W 8-0 (9/6/15)

20-29 Shots 20, vs. Baylor, W 2-0 (9/30/16)
 30-39 Shots 43, vs. Saint Francis, W 3-1 (8/28/16)
 40-49 Shots 43, vs. Saint Francis, W 3-1 (8/28/16)
 0-9 Shots on Goal 4, at Kansas, W 1-0 (10/7/16)
 10-14 Shots On Goal 11, at Richmond, W 4-1 (9/23/16)
 15-19 Shots On Goal 17, vs. Saint Francis, W 3-1 (8/28/16)
 0-2 Shot On Goal and Won 2, vs. Rutgers, W 1-0 (10/31/10)

5-9 Saves 6, at Richmond, W 4-1 (9/23/16)
 10-14 Saves 10, vs. Notre Dame, L 2-1 (OT) (9/22/00)
 15-19 Saves 16, vs. Boston College, T 0-0 (2OT) (10/4/98)
 0 Saves and Won vs. Baylor, W 2-0 (9/30/16)

Held Opponents to No Shots vs. Longwood, W 4-0 (9/13/15)
 Held Opponents to One Shot vs. Purdue, W 2-0 (9/1/16)
 Held Opponents to No Shots On Goal vs. Baylor, W 2-0 (9/30/16)
 Held Opponents to One Shot On Goal vs. Ohio State, W 2-1 (9/4/16)

A WVU player (Single Game)

Two Goals Michaela Abam, at Duke, W 3-1 (9/9/16)
 Three Goals Kailey Utley, vs. Loyola Marymount, W 5-2 (11/22/15)
 Four Goals Michaela Abam, vs. Villanova, W 8-0 (9/6/15)
 Five Goals No Instances on Record

Two Assists Carla Portillo, vs. Ohio State, W 2-1 (9/4/16)
 Three Assists Kailey Utley (4), vs. Villanova, W 8-0 (9/6/15)
 Four Assists Kailey Utley, vs. Villanova, W 8-0 (9/6/15)

Six Points Kailey Utley, vs. Loyola Marymount, W 5-2 (11/22/15)
 Seven Points Michaela Abam (8), vs. Villanova, W 8-0 (9/6/15)
 Eight Points Michaela Abam, vs. Villanova, W 8-0 (9/6/15)

Seven Shots Michaela Abam, vs. Oklahoma, W 2-0 (10/2/16)
 Eight Shots Sh'Nia Gordon (9), vs. Saint Francis, W 3-1 (8/28/16)
 10 Shots Michaela Abam (10), vs. Buffalo, W 1-0 (OT) (9/18/15)
 10+ Shots Kate Schwindel (11), vs. TCU, W 3-2 (OT) (10/13/13)

Four Shots On Goal Michaela Abam, vs. Oklahoma, W 2-0 (10/2/16)
 Five Shots On Goal Michaela Abam, vs. Villanova, W 8-0 (9/6/15)
 Six Shots On Goal Megan Mischler, at Louisville, W 2-1 (10/3/10)
 Seven Shots On Goal Kate Schwindel, vs. TCU, W 3-2 (OT) (10/13/13)
 Eight Shots On Goal Kim Bonilla, vs. St. Bonaventure,
 W 8-0 (10/10/06)

Made a Penalty Kick Ashley Lawrence, vs. Princeton, W 3-0 (9/16/16)
 Missed a Penalty Kick Kadeisha Buchanan, vs. Baylor, W 2-0 (9/30/16)

5-9 Saves 6, Rylee Foster at Richmond, W 4-1 (9/23/16)
 10-14 Saves 10, Melissa Haire vs. Notre Dame, L 2-1 (9/22/00)
 15-19 Saves 16, Stacey Adams vs. Boston College, T 0-0 (2OT) (10/4/98)
 0 Saves and Won Rylee Foster, vs. Baylor, W 2-0 (9/30/16)

Defense Back for More: Back to anchor the Mountaineer defense for one final season is three-time NSCAA All-American and three-time reigning Big 12 Defensive Player of the Year, senior center back Kadeisha Buchanan. Under her leadership, the WVU backline has allowed just 56 opponent goals since 2013, including a program-low 11 in 2015, the same season the unit also posted a school-record 15 shutouts.

Sophomore Bianca St. Georges, the reigning Big 12 Newcomer of the Year, also returned in 2016, as did senior Carly Black and sophomore Easther Mayi Kith. Black started 52 straight career matches prior to suffering a season-ending injury in 2015. Mayi Kith replaced her in the lineup and started the remaining 15 matches. Junior Amandine Pierre-Louis adds speed to the line this season.

Through 13 matches in 2016, the WVU defense has posted seven shutouts and allowed just six opponent goals for a 0.45 GAA. The six goals allowed are the fourth-fewest allowed in the NCAA (through games played as of Oct. 7).

The Mountaineers have denied opponents a goal in 21 halves this season. Additionally, the unit has held opponents to just 29 corner kick opportunities for a 2.3 average.

No Shots for You: WVU has held opponents to just 85 shots through 13 games in 2016, with only 39 attempts landing on-frame. This season, the Mountaineers denied Purdue and Baylor a shot on-goal.

The Mountaineers denied Longwood a shot in a 4-0 win on Sept. 13, 2015, marking the second time in as many seasons and the fifth time in program history that WVU denied an opponent a shot.

Foster Finds Early Success: Freshman goalkeeper Rylee Foster played lights out in her WVU career debut, making nine saves at No. 2 Penn State on Aug. 19 to help the Mountaineers earn a 1-1 2OT draw against the defending National Champions.

Foster is 8-1-1 on the season and shows a Big 12-best 0.39 GAA, the 11th-best mark nationally, and a .857 save percentage, the second-best Big 12 mark. She has made 24 saves and posted five shutouts.

Newhouse Impressive, Too: Junior Michelle Newhouse has split time with freshman Rylee Foster in net this season and also found early success, starting three matches, the first starts of her career, and posting a 3-0 record, including a 3-1 win at No. 5 Duke on Sept. 9. She earned her first career shutout with a 3-0 win vs. Princeton on Sept. 16. She has played in four total matches and shows a 0.63 GAA, making eight saves and allowing two goals.

Goals Galore: The Mountaineers returned 59 percent of the record-setting 61 goals scored in 2015, and the team's top-returning point earner opened 2016 scoring goals, as junior forward Michaela Abam netted the team's lone score in a 1-1 (2OT) draw at No. 2 Penn State on Aug. 19.

Sophomore forward Sh'Nia Gordon returned to the starting lineup after finishing 2015 tied for fourth on the team with 13 points (5 G, 3 A). Junior midfielder Carla Portillo also returned. She started 21 matches and finished with 10 points (3 G, 4 A). Both were All-Big 12 honorees in 2015.

New to the starting rotation this season is junior forward Heather Kaleiohi. Though she missed two early matches, she ranks second on the team with eight points, including a career-high four goals and a team-high two game-winners.

Also expected to factor into the offensive threat this season are transfers Alli Magaletta and Grace Cutler, as well as sophomores Hannah Abraham and Vanessa Flores.

Abam is Awesome: Junior forward Michaela Abam has wasted little time returning to the top of the team's stat sheet. The leading goal scorer in 2015, she again paces, as she ranks No. 1 on the team with 16 points (7 G, 2 A), the third-best total in the Big 12. Abam's team-best seven goals are tops in the Big 12 and are the seventh-most scored in the NCAA this season. With 27 career goals to her name, she needs one more to break onto the WVU all-time career goals list.

Abam had a tremendous start to the Big 12 season, contributing five points in the Mountaineers' 2-0 wins over Baylor on Sept. 30 and No. 23 Oklahoma on Oct. 2. She tallied the game-winner against the Bears just 3:11 into the match. Against OU, she assisted on Hannah Abraham's game-winner in the 78th minute and added an insurance goal in the 86th minute. Her point production was tops in the conference for the weekend, and for her efforts she earned Big 12 Offensive Player of the Week accolades.

Lawrence Dishes Out Assists: Senior midfielder/defender Ashley Lawrence helps drive the Mountaineer offense. An NSCAA All-America First Team honoree one year ago, she has dished out four helpers this season and ranks No. 5 on the WVU all-time career assists lists with 23. The 23 assists rank No. 12 on the NCAA active career leaders list. Additionally, Lawrence's 0.29 assists/game career average ranks No. 23 on the NCAA active career leaders list.

Double the Fun: Two Mountaineers have netted at least two goals in one game this season: sophomore forward Sh'Nia Gordon (2 vs. Saint Francis, Aug. 28) and junior forward Michaela Abam (2 at No. 5 Duke, Sept. 9).

Since 2010, WVU has had 24 instances where one Mountaineer has netted at least two goals in one game, including seven two-goal performances in 2014, the program's best single-season total in that time frame. The WVU single-game goal record is four, hit by Abam in the Mountaineers' record-setting 8-0 win vs. Villanova on Sept. 6, 2015.

Morgantown Magic: The Mountaineers have developed a true home field advantage, going 114-18-13 at Dick Dlesk Soccer Stadium since its opening in August 2004.

WVU recently put its name in the NCAA Record Book, as the Mountaineers went unbeaten in 30 straight home matches, not losing a contest at DDSS from Aug. 30, 2014 - Sept. 16, 2016. The streak ranks No. 11 all-time in NCAA women's soccer history. The streak was snapped with a 1-0 (2OT) loss to No. 9 Georgetown on Sept. 18, 2016.

The Mountaineers have played in front of more than 12,000 fans through eight home games this season and have set four top-10 attendance marks. A season-high 2,019 fans were on hand to cheer the Mountaineers to a 1-0 win over No. 8 Clemson in their home season opener on Aug. 26. The crowd was the fourth-largest women's crowd in stadium history. Through games played as of Oct. 7, WVU ranks No. 7 nationally in accumulate attendance (12,479) and No. 8 in average attendance (1,560). Both numbers are tops in the Big 12 Conference.

The Mountaineer attendance record is 3,000+, set on Nov. 30, 2007, in the team's 1-0 loss to USC in the quarterfinals of the NCAA Tournament. Over the last six seasons, more than 60,000 fans have packed the stands to make Dick Dlesk Soccer Stadium one of the toughest environments in the Big 12.

| Top 10 Crowds for Women's Soccer at Dick Dlesk Soccer Stadium (2004-present) | | | |
|--|--------|-------------------|--------|
| Date | Crowd | Opponent | Result |
| 11/30/07 | 3,000+ | No. 8 USC* | L, 0-1 |
| 8/31/12 | 2,057 | No. 6 Penn State | L, 1-2 |
| 8/29/14 | 2,045 | No. 21 Duke | L, 0-2 |
| 8/26/16 | 2,019 | No. 8 Clemson | W, 1-0 |
| 10/2/16 | 1,973 | No. 23 Oklahoma | W, 2-0 |
| 9/16/16 | 1,946 | Princeton | W, 3-0 |
| 9/4/16 | 1,763 | No. 19 Ohio State | W, 2-1 |
| 11/12/10 | 1,688 | Morehead State* | W, 2-0 |
| 9/25/15 | 1,617 | Texas | W, 2-0 |
| 9/21/08 | 1,615 | No. 6 Virginia | W, 3-0 |

* NCAA Tournament

| WVU's 2016 Game-Winning Goals | | | | |
|-------------------------------|-------------------|-------|-------|-------|
| Name | Opponent | Time | Score | Final |
| Heather Kaleiohi | vs. Buffalo | 21:27 | 1-0 | 2-0 |
| Amandine Pierre-Louis | No. 8 Clemson | 56:55 | 1-0 | 1-0 |
| Kadeisha Buchanan | Saint Francis | 54:24 | 2-1 | 3-1 |
| Heather Kaleiohi (2) | Purdue | 65:12 | 1-0 | 2-0 |
| Hannah Abraham | No. 19 Ohio State | 76:01 | 2-1 | 2-1 |
| Michaela Abam | at No. 5 Duke | 49:35 | 2-0 | 3-1 |
| Alli Magaletta | Princeton | 40:55 | 1-0 | 3-0 |
| Hannah Abraham (2) | at Richmond | 41:33 | 2-0 | 4-1 |
| Michaela Abam (2) | Baylor | 3:11 | 1-0 | 2-0 |
| Hannah Abraham (3) | No. 23 Oklahoma | 77:29 | 1-0 | 2-0 |
| Alli Magaletta (2) | at Kansas | 37:57 | 1-0 | 1-0 |

Mountaineers in the Record Book

Career

Goals

| | | |
|------------------------------------|--------------------------|-----------|
| 1. | Chrissie Abbott, 2000-03 | 53 |
| 2. | Katie Barnes, 1998-2001 | 45 |
| 3. | Deana Everett, 2005-08 | 39 |
| 4. | Frances Silva, 2010-13 | 38 |
| 5. | Ashley Banks, 2004-07 | 34 |
| 6. | Kate Schwindel, 2011-14 | 33 |
| | Blake Miller, 2008-11 | 33 |
| 8. | Laura Kane, 2001-04 | 31 |
| 9. | Rena Lippa, 1996-98 | 29 |
| 10. | Marisa Kanela, 2002-05 | 28 |
| Michaela Abam, 2014-present | | 27 |

Assists

| | | |
|-----|--------------------------------------|-----------|
| 1. | Lisa Stoia, 2000-03 | 33 |
| 2. | Katie Barnes, 1998-2001 | 30 |
| 3. | Ashley Banks, 2004-07 | 26 |
| 4. | Deana Everett, 2005-08 | 24 |
| 5. | Ashley Lawrence, 2013-present | 23 |
| | Laura Kane, 2001-04 | 23 |
| | Rachel Kruze, 1999-2002 | 23 |
| 8. | Kate Schwindel, 2011-14 | 22 |
| | Frances Silva, 2010-13 | 22 |
| 10. | Kim Bonilla, 2004-07 | 21 |

Points

| | | |
|------------------------------------|--------------------------|-----------|
| 1. | Chrissie Abbott, 2000-03 | 125 |
| 2. | Katie Barnes, 1998-2001 | 120 |
| 3. | Deana Everett, 2005-08 | 102 |
| 4. | Frances Silva, 2010-13 | 98 |
| 5. | Ashley Banks, 2004-07 | 94 |
| 6. | Kate Schwindel, 2011-14 | 88 |
| 7. | Laura Kane, 2001-04 | 85 |
| | Blake Miller, 2008-11 | 85 |
| 9. | Marisa Kanela, 2002-05 | 76 |
| 10. | Lisa Stoia, 2000-03 | 71 |
| Michaela Abam, 2014-present | | 60 |

Shots

| | | |
|-----|------------------------------------|------------|
| 1. | Chrissie Abbott, 2000-03 | 472 |
| 2. | Katie Barnes, 1998-2001 | 339 |
| 3. | Deana Everett, 2005-08 | 299 |
| 4. | Blake Miller, 2008-11 | 260 |
| 5. | Kate Schwindel, 2011-14 | 259 |
| 6. | Laura Kane, 2001-04 | 256 |
| 7. | Ashley Banks, 2004-07 | 246 |
| 8. | Frances Silva, 2010-13 | 238 |
| 9. | Michaela Abam, 2014-present | 237 |
| 10. | Marisa Kanela, 2002-05 | 228 |

Class Records

Junior Goals

| | Year | Games | Goals | Avg. | |
|----------------------|-----------------|-------------|-----------|----------|-------------|
| 1. | Chrissie Abbott | 2002 | 22 | 20 | 0.91 |
| 2. | Katie Barnes | 2000 | 21 | 17 | 0.81 |
| 3. | Rena Lippa | 1997 | 19 | 11 | 0.58 |
| | Marisa Kanela | 2004 | 21 | 11 | 0.58 |
| | Frances Silva | 2012 | 20 | 11 | 0.55 |
| | Kate Schwindel | 2013 | 18 | 11 | 0.61 |
| Michaela Abam | | 2016 | 12 | 7 | 0.64 |

Junior Assists

| | Year | Games | Assists | Avg. | |
|-----------------------|---------------|-------------|-----------|----------|-------------|
| 1. | Kim Bonilla | 2006 | 21 | 12 | 0.57 |
| 2. | Lisa Stoia | 2002 | 22 | 10 | 0.45 |
| 3. | Bry McCarthy | 2011 | 22 | 9 | 0.40 |
| | Blake Miller | 2010 | 24 | 9 | 0.38 |
| | Katie Barnes | 2000 | 21 | 9 | 0.43 |
| | Deana Everett | 2007 | 23 | 9 | 0.39 |
| Carla Portillo | | 2016 | 12 | 5 | 0.42 |

Junior Points

| | Year | Games | Points | Avg. | |
|----------------------|-----------------|-------------|-----------|-----------|-------------|
| 1. | Chrissie Abbott | 2002 | 22 | 47 | 2.14 |
| 2. | Katie Barnes | 2000 | 21 | 43 | 2.05 |
| 3. | Kim Bonilla | 2006 | 21 | 30 | 1.42 |
| 4. | Deana Everett | 2007 | 21 | 29 | 1.26 |
| | Blake Miller | 2010 | 24 | 29 | 1.21 |
| Michaela Abam | | 2016 | 12 | 16 | 1.33 |

Single Game

Goals

| | | |
|---|------------------------------|---------------|
| 4 | Michaela Abam, vs. Villanova | Sept. 6, 2015 |
|---|------------------------------|---------------|

Points

| | | |
|---|------------------------------|---------------|
| 8 | Michaela Abam, vs. Villanova | Sept. 6, 2015 |
|---|------------------------------|---------------|

Score Often, Score Early: One of coach Nikki Izzo-Brown's weekly goals is for the Mountaineers to score first each game. Izzo-Brown not only urges the Mountaineers to score first - she also wants them to score fast.

Junior Heather Kaleiohi scored the fastest goal in program history at Richmond on Sept. 23, tallying a score just 47 seconds into the match.

All-Time Goals Scored In First Four Minutes

0:47 Heather Kaleiohi, September 23, 2016 (Away at Richmond)
 0:55 Kate Schwindel, September 30, 2011 (Away at Georgetown)
 1:02 Ashley Lawrence, October 2, 2015 (Home vs. TCU)
 1:17 Kambria Riggins, September 5, 2003 (Neutral vs. New Hampshire)
 1:18 Bry McCarthy, August 17, 2012 (Home vs. La Salle)
 1:23 Sh'Nia Gordon, September 6, 2015 (Home vs. Villanova)
 1:29 Carolyn Blank, November 13, 2009 (Neutral vs. Loyola)
 1:43 Laura Kane, October 6, 2002 (Home vs. Notre Dame)
 1:47 Kim Bonilla, September 22, 2006 (Home vs. Syracuse)
 1:57 Megan Mischler, September 21, 2008 (Home vs. Virginia)
 2:31 Lisa Stoia, October 21, 2001 (Home vs. Georgetown)
 2:44 Laura Kane, September 7, 2003 (Away at James Madison)
 2:47 Kailey Utley, August 30, 2015 (Home vs. Duquesne)
 2:52 Kate Schwindel, August 25, 2013 (Neutral vs. Syracuse)
 2:54 Lisa Zanti, September 24, 2003 (Home vs. Binghamton)
3:11 Michaela Abam, September 30, 2016 (Home vs. Baylor)
 3:12 Caroline Szwed, October 22, 2010 (Home vs. Connecticut)
 3:17 Cathy Abel, November 14, 2004 (Away at Texas)
 3:20 Kailey Utley, October 16, 2015 (Home vs. Kansas)
 3:29 Carla Portillo, November 13, 2015 (Home vs. Duquesne)
 3:32 Sh'Nia Gordon, August 30, 2015 (Home vs. Duquesne)
 3:32 Katie Barnes, September 14, 1999 (Home vs. Virginia Tech)
 3:53 Kailey Utley, September 5, 2014 (Home vs. Hofstra)
 3:57 Blake Miller, November 4, 2011 (Home vs. Georgetown)
 3:59 Robyn D'Aversa, October 21, 1998 (Home vs. Ohio)

Goal Record Set: As spectacular as the Mountaineer defense was in 2015, the offense was just as special. The Mountaineers set the program single-season goal record in their 4-0 victory over Northwestern in the NCAA Tournament Second Round on Nov. 20, at Dick Dlesk Dlesk Soccer Stadium. At season end, the record stood at 61 goals, besting the previous record of 55 set in 2006. Fourteen different Mountaineers scored at least one goal last season, including a team-best 12 from forwards Kailey Utley and Michaela Abam.

The Mountaineers have started to chase the record this season. They show 26 goals scored for a 2.00 goals/game average. The goal total ranks No. 43 nationally and is the 13th-most goals scored this season. WVU tallied its first four-goal game of 2016 with a 4-1 win at Richmond on Sept. 23.

Four+ Goal Games, by Season

| Rank | Season | Four+ Goal Games | Final Record |
|-----------|-------------|------------------|---------------|
| 1 | 2015 | 9 | 19-3-1 |
| 2 | 2006 | 8 | 14-4-3 |
| 3 | 2004 | 7 | 15-6 |
| 4 | 2002 | 6 | 18-3-1 |
| 5 | 2014 | 5 | 16-2-3 |
| | 2003 | 5 | 17-4-2 |
| | 1999 | 5 | 9-9-1 |
| 8 | 2013 | 4 | 16-3-4 |
| | 2011 | 4 | 17-4 |
| | 2007 | 4 | 18-5-2 |
| | 2001 | 4 | 15-5-1 |
| | 1997 | 4 | 11-6-2 |
| | 1996 | 4 | 10-7-2 |
| 14 | 2010 | 3 | 18-5-1 |
| | 2008 | 3 | 14-3-6 |
| | 2000 | 3 | 15-6 |
| 17 | 2012 | 2 | 11-5-4 |
| 18 | 2016 | 1 | 11-1-1 |
| | 2009 | 1 | 10-7-6 |
| | 2005 | 1 | 12-6-3 |
| | 1998 | 1 | 11-6-2 |

**The Mountaineers are 82-0 all-time when scoring four or more goals.

2016 Mountaineer Accolades

Michaela Abam

- Big 12 Offensive Player of the Week (9/13, 10/4)
- TDS.com Team of the Week (9/13)
- Preseason All-Big 12 Soccer Team
- TDS.com Preseason No. 39

Kadeisha Buchanan

- Rio Summer Olympics Bronze Medalist (Canada)
- MAC Hermann Trophy Candidate
- Senior CLASS Award Candidate
- Big 12 Defensive Player of the Week (8/30, 10/4)
- TDS.com Team of the Week (8/30, 10/4)
- Preseason All-Big 12 Soccer Team
- TDS.com Preseason Best XI First Team
- TDS.com Preseason No. 2

Rylee Foster

- WVU Student-Athlete of the Week (8/22)

Coach Nikki Izzo-Brown

- Earned career win No. 300 with 2-0 victory over Buffalo on Aug. 21 (University Park, Pa.)
- Named to the TDS.com Top 10 Coaches in the Women's College Game List

Heather Kaleiohi

- WVU Student-Athlete of the Week (9/26)

Ashley Lawrence

- Rio Summer Olympics Bronze Medalist (Canada)
- MAC Hermann Trophy Candidate
- Senior CLASS Award Candidate
- Preseason All-Big 12 Soccer Team
- TDS.com Preseason Best XI First Team
- TDS.com Preseason No. 9

Amandine Pierre-Louis

- Big 12 Defensive Player of the Week (9/13)
- TDS.com Team of the Week Honor Roll (8/23)

Carla Portillo

- Preseason All-Big 12 Soccer Team
- TDS.com Preseason No. 66

Power of Pink: Raising awareness for breast cancer research is a cause close to coach Nikki Izzo-Brown, and each year, she and the Mountaineers raise funds for Morgantown's Betty Puskar Breast Care Center. WVU donated a check for \$5,025 at halftime of the WVU-OU match on October 2.

WVU passed the \$100,000 threshold in 2013. In 12 years, the Mountaineers have raised more than \$120,000 for breast cancer research.

Taking Names: With its 1-0 win against No. 8 Clemson in its 2016 home season opener at Dick Dlesk Soccer Stadium on Aug. 26, WVU has defeated at least one top-10 team in each of the last 12 seasons. The Mountaineers then earned a 3-1 win at No. 5 Duke on Sept. 9, giving the squad two wins over top-10 opponents in one season for the first time since 2012 and the third time since 2005. WVU is 15-12-3 against top-10 teams and 26-28-9 against all ranked opponents since 2005.

| Wins vs. the Top 10 | | |
|---------------------|----------------------------|--------------|
| 2016 | at No. 5 Duke | W, 3-1 |
| 2016 | No. 8 Clemson | W, 1-0 |
| 2015 | No. 5 Penn State | W, 1-0 |
| 2014 | at No. 9 Kansas | W, 2-0 |
| 2013 | at No. 9 Baylor | W, 4-3 |
| 2012 | No. 1 Stanford | W, 1-0 |
| 2012 | No. 7 Oklahoma State | W, 1-0 |
| 2011 | No. 9 Marquette | W, 3-1 |
| 2010 | No. 9 Virginia | W, 1-0 |
| 2009 | at No. 9 Rutgers | W, 1-0 |
| 2009 | at No. 8 Penn State | W, 2-1 |
| 2008 | No. 7 Virginia | W, 3-0 |
| 2007 | at No. 6 Penn State | W, 1-0 |
| 2006 | at No. 7 Penn State | W, 2-1 |
| 2005 | at No. 9 Marquette | W, 2-0 |

Home Points: Big 12 or Big East, one fact has remained constant for the Mountaineers since 2009 - they do not lose home conference matches. WVU shows a 32-match unbeaten streak in conference games at Dick Dlesk Soccer Stadium and has not dropped a league contest since losing 3-2 in overtime to No. 8 Notre Dame on Oct. 2, 2009. The streak ranks No. 3 nationally. WVU is 17-0-1 in all-time home Big 12 matches.

| Active Home Conference Unbeaten Streak | | |
|--|-----------|---------------------|
| Team | Streak | Year |
| 1. North Texas | 36 | 2009-present |
| Boston University | 36 | 2007-present |
| 3. West Virginia | 32 | 2009-present |
| 4. Florida Gulf Coast | 31 | 2009-present |
| 5. South Dakota State | 29 | 2009-present |

Through games as of 10/7

Seniors' Last Stand: The 2016 Mountaineer senior class has earned five conference titles during its time at WVU, the third-best total in the program's 21-year history.

This year's senior class – Carly Black, Kadeisha Buchanan, Ashley Lawrence and Ashley Woolpert – has won three straight Big 12 regular-season crowns and the 2013 and 2014 Big 12 Soccer Championship titles. The program record for conference titles won by one class is seven, set by the 2014 senior class.

New Faces: Six student-athletes donned the Gold and Blue for the first time in 2016: transfers Grace Cutler (forward, Santa Clara) and Alli Magaletta (midfielder, Missouri), as well as freshmen Amanda Burns (midfielder), Rylee Foster (goalkeeper), Jade Gentile (midfielder/forward) and Brooke Myers (goalkeeper).

Nice to Meet You: WVU's 2016 regular-season schedule featured just one first-time opponent in Clemson. The Mountaineers defeated the No. 8 Tigers, 1-0, on Aug. 26, in their home season opener at Dick Dlesk Soccer Stadium.

In the program's 21-year history, WVU has faced 107 different teams.

Record When Scoring Two or More Goals

| | | |
|-----------------|-------|-----------------|
| 1996 | | 7-1-0 |
| 1997 | | 6-0-1 |
| 1998 | | 9-0-0 |
| 1999 | | 9-0-0 |
| 2000 | | 10-2-0 |
| 2001 | | 13-0-0 |
| 2002 | | 16-0-0 |
| 2003 | | 16-1-0 |
| 2004 | | 14-0-0 |
| 2005 | | 9-1-0 |
| 2006 | | 13-1-0 |
| 2007 | | 12-0-0 |
| 2008 | | 11-1-0 |
| 2009 | | 4-1-0 |
| 2010 | | 13-0-0 |
| 2011 | | 13-0-0 |
| 2012 | | 7-0-1 |
| 2013 | | 14-2-1 |
| 2014 | | 15-0-0 |
| 2015 | | 15-0-0 |
| 2016 | | 9-0 |
| All-Time | | 235-10-3 |

*20-6-1 against opponents ranked in the top 25 when scoring two or more goals

**79% of program wins come when scoring two or more goals

The Mountaineers Are...

- 297-102-45 all-time, now in the program's 21st season;
- 174-34-17 all-time home record;
- 114-18-13 at Dick Dlesk Soccer Stadium;
- 91-54-23 all-time away record;
- 32-14-5 all-time neutral record;
- 9-9-3 all-time in season openers;
- 4-1-1 in 2016 versus ranked opponents;
- 1-0-1 in 2016 televised games;
- 8-0-1 in 2016 night games;
- 3-1-0 in 2016 day games (before 5 p.m.);
- 0-1-1 in 2016 overtime games;
- 9-1-0 in 2016 in games following a victory;
- 1-0-0 in 2016 in games following a loss;
- 1-0-0 in 2016 in games following a tie;
- 9-0-0 in 2016 when leading after 75 minutes;
- 0-0-1 in 2016 when trailing after 75 minutes;
- 2-1-0 in 2016 when tied after 75 minutes;
- 7-0-0 in 2016 when leading at the half;
- 4-1-1 in 2016 when tied at the half;
- 0-0-0 in 2016 when trailing at the half;
- 10-0-0 in 2016 when scoring first;
- 1-1-1 in 2016 when opponents score first;
- 2-1-1 in 2016 in one-goal games;
- 9-0-0 in 2016 when scoring 2 or more goals;
- 0-0-0 in 2016 when allowing 2 or more goals;
- 2-0-0 in 2016 when wearing white uniforms;
- 4-0-0 in 2016 when wearing navy uniforms;
- 4-1-1 in 2016 when wearing gold uniforms; and
- 1-0-0 in 2016 when wearing pink uniforms.

Mountaineer Single-Game Highs

(Stats given for those that played a game for WVU in 2016; season high/career high)
GP, GS = 2016 total/career total

| | | | |
|--|---|---|---|
| <p>1 Michelle Newhouse (GK) GP: 4/12 GS: 3/same MIN: 90:00 (3 times)/same GA: 1 (2 times)/same SO: 1 vs. Princeton (9/16)/same Saves: 4 vs. Princeton (9/16)/same</p> | <p>9 Ashley Lawrence (M) GP: 11/77 GS: 10/73 G: 1 vs. Princeton (9/16)/1 (14 times) A: 1 (4 times)/2 (4 times) P: 2 vs. Princeton (9/16)/3 (2 times) SH: 5 at Richmond (9/23)/ 6 vs. TCU (10/13/13) SoG: 2 vs. Saint Francis (8/28)/3 (3 times)</p> | <p>14 Patricia Fernandez (M) GP: 7/14 GS: 1/same G: 0/same A: 0/same P: 0/same SH: 2 vs. Saint Francis (8/28)/2 (2 times) SoG: 1 vs. Saint Francis (8/28)/1 (2 times)</p> | <p>24 Carly Black (D) GP: 9/61 GS: 4/56 G: 0/1 vs. Wright State (9/22/13) A: 1 at Richmond (9/23)/1 (5 times) P: 1 at Richmond (9/23)/ 2 vs. Wright State (9/22/13) SH: 1 (2 times)/4 vs. Texas (11/7/14) SoG: 1 vs. Saint Francis (8/28)/ 1 (6 times)</p> |
| <p>2 Jade Gentile (M/F) GP: 8/same GS: 0/same G: 1 at Richmond (9/23)/same A: 0/same P: 2 at Richmond (9/23)/same SH: 2 vs. Saint Francis (8/28)/same SoG: 1 (4 times)/same</p> | <p>10 Carla Portillo (M) GP: 13/57 GS: 34/same G: 1 at Richmond (9/23)/1 (4 times) A: 2 vs. Ohio State (9/4)/same P: 2 (2 times)/ 3 vs. Longwood (9/13/15) SH: 2 vs. Saint Francis (8/28)/ 5 vs. Duquesne (9/14/14) SoG: 1 (2 times)/2 vs. TCU (10/2/15)</p> | <p>16 Easther Mayi-Kith (D) GP: 13/33 GS: 13/29 G: 0/same A: 0/same P: 0/same SH: 1 vs. Baylor (9/30)/same SoG: 0/same</p> | <p>25 Rylee Foster (GK) GP: 10/same GS: 10/same MIN: 110:00 at Penn State (8/19)/same GA: 1 (4 times)/same SO: 5/same Saves: 9 at Penn State (8/19)/same</p> |
| <p>4 Bianca St. Georges (D) GP: 7/29 GS: 6/28 G: 0/same A: 1 at Richmond (9/23)/1 (7 times) P: 1 at Richmond (9/23)/1 (7 times) SH: 2 at Penn State (8/19)/ 4 at Oklahoma (10/9/15) SoG: 1 (4 times)/ 2 at Oklahoma (10/9/15)</p> | <p>11 Amandine Pierre-Louis (D) GP: 13/54 GS: 13/27 G: 1 (2 times)/2 vs. Oklahoma (10/26/14) A: 1 (3 times)/ 2 vs. Kansas (10/16/15) P: 2 (2 times)/4 vs. Oklahoma (10/26/14) SH: 4 (2 times)/ 8 vs. Georgetown (9/12/14) SoG: 2 (3 times)/ 5 vs. Georgetown (9/12/14)</p> | <p>18 Ashley Woolpert (F/M) GP: 12/32 GS: 0/same G: 0/same A: 1 (2 times)/same P: 1 (2 times)/same SH: 1(3 times)/1 (7 times) SoG: 1 (2 times)/1 (3 times)</p> | <p>26 Vanessa Flores (M) GP: 12/20 GS: 6/same G: 0/same A: 1 at Penn State (8/19)/same P: 1 at Penn State (8/19)/same SH: 3 vs. Saint Francis (8/28)/same SoG: 1 vs. Saint Francis (8/28)/same</p> |
| <p>5 Michaela Abam (F) GP: 13/58 GS: 13/42 G: 2 at Duke (9/9)/4 vs. Villanova (9/6/15) A: 1 (2 times)/ 2 vs. Loyola Marymount (11/22/15) P: 4 at Duke (9/9)/8 vs. Villanova (9/6/15) SH: 7 (2 times)/10 (4 times) SoG: 4 (3 times)/5 vs. Villanova (9/6/15)</p> | <p>12 Macy Stalaker (F/M) GP: 4/8 GS: 1/same G: 0/same A: 0/same P: 0/same SH: 0/ 1 (3 times) SoG: 0/ 1 vs. Longwood (9/13/15)</p> | <p>19 Laurel Carpenter (M) GP: 1/3 GS: 0/same G: 0/same A: 0/same P: 0/same SH: 0/same SoG: 0/same</p> | <p>88 Kadeisha Buchanan (D) GP: 11/77 GS: 10/76 G: 1 vs. Saint Francis (8/28)/1 (6 times) A: 0/ 2 vs. Northwestern (11/20/15) P: 2 vs. Saint Francis (8/28)/2 (7 times) SH: 3 (3 times)/3 (8 times) SoG: 2 vs. Princeton (9/16)/2 (3 times)</p> |
| <p>6 Heather Kaleiohi (F) GP: 11/36 GS: 9/same G: 1 (4 times)/1 (6 times) A: 1 vs. Oklahoma (10/2)/1 (3 times) P: 2 (4 times)/2 (6 times) SH: 5 vs. Buffalo (8/21)/same SoG: 3 vs. Ohio State (9/4)/same</p> | <p>13 Amanda Saymon (M) GP: 3/5 GS: 0/same G: 0/same A: 0/same P: 0/same SH: 0/same SoG: 0/same</p> | <p>20 Hannah Abraham (F/D) GP: 13/34 GS: 4/5 G: 1 (3 times)/1 (7 times) A: 1 vs. Baylor (9/30)/1 (2 times) P: 2 (2 times)/2 (6 times) SH: 4 vs. Purdue (9/1)/same SoG: 2 at Richmond (9/23)/same</p> | <p>97 Dalanda Ouendeno (D) GP: 4/12 GS: 1/same G: 0/same A: 1 vs. Purdue (9/1)/same P: 1 vs. Purdue (9/1)/same SH: 2 vs. Purdue (9/1)/same SoG: 1 vs. Purdue (9/1)/1 (2 times)</p> |
| <p>7 Grace Cutler (F) GP: 13/same GS: 0/same G: 1 vs. Buffalo (8/21)/same A: 0/same P: 2 vs. Buffalo (8/21)/same SH: 5 vs. Saint Francis (8/28)/same SoG: 2 (3 times)/same</p> | | <p>22 Alli Magaletta (M) GP: 13/same GS: 13/same G: 1 (2 times)/same A: 1 (2 times)/same P: 2 (2 times)/same SH: 3 at Duke (9/9)/same SoG: 1 (4 times)/same</p> | <p>99 Sh'Nia Gordon (F) GP: 13/36 GS: 13/36 G: 2 vs. Saint Francis (8/28)/same A: 1 (2 times)/1 (5 times) P: 4 vs. Saint Francis (8/28)/same SH: 9 vs. Saint Francis (8/28)/same SoG: 3 (2 times)/3 (4 times)</p> |

Last Time They Scored...

| Player (Career Goal) | Opponent | Date |
|---------------------------|-----------------|---------|
| Alli Magaletta (2) | at Kansas | 10/7/16 |
| Michaela Abam (27) | No. 23 Oklahoma | 10/2/16 |
| Hannah Abraham (7) | No. 23 Oklahoma | 10/2/16 |
| Sh'Nia Gordon (8) | Baylor | 9/30/16 |
| Jade Gentile (1) | at Richmond | 9/23/16 |
| Carla Portillo (4) | at Richmond | 9/23/16 |
| Heather Kaleiohi (6) | at Richmond | 9/23/16 |
| Ashley Lawrence (14) | Princeton | 9/16/16 |
| Amandine Pierre-Louis (9) | at No. 5 Duke | 9/9/16 |
| Kadeisha Buchanan (6) | Saint Francis | 8/28/16 |
| Grace Cutler (1) | vs. Buffalo | 8/21/16 |
| Carly Black (1) | Wright State | 9/22/13 |

Mountaineer Individual Statistics

(Stats given for those that have played at least one career game at WVU; 2016 total/career total)

| | | | |
|---|---|--|--|
| <p>1 Michelle Newhouse (GK) Saves: 7/10 Goals Against: 2/2 Shutouts: 1/1</p> | <p>9 Ashley Lawrence (M) Goals: 1/14 Assists: 4/23 Points: 6/51</p> | <p>16 Easter Mayi-Kith (D) Goals: 0/0 Assists: 0/0 Points: 0/0</p> | <p>25 Rylee Foster (GK) Saves: 24/24 Goals Against: 4/4 Shutouts: 5/5</p> |
| <p>2 Jade Gentile (M/F) Goals: 1/1 Assists: 0/0 Points: 2/2</p> | <p>10 Carla Portillo (M) Goals: 1/4 Assists: 5/11 Points: 7/19</p> | <p>18 Ashley Woolpert (F/M) Goals: 0/0 Assists: 2/2 Points: 2/2</p> | <p>26 Vanessa Flores (M) Goals: 0/0 Assists: 1/1 Points: 1/1</p> |
| <p>4 Bianca St. Georges (D) Goals: 0/0 Assists: 1/7 Points: 1/7</p> | <p>11 Amandine Pierre-Louis (D) Goals: 2/9 Assists: 3/9 Points: 7/27</p> | <p>19 Laurel Carpenter (M) Goals: 0/0 Assists: 0/0 Points: 0/0</p> | <p>88 Kadeisha Buchanan (D) Goals: 1/6 Assists: 0/6 Points: 2/18</p> |
| <p>5 Michaela Abam (F) Goals: 7/27 Assists: 2/6 Points: 16/60</p> | <p>12 Macy Stalnaker (F/M) Goals: 0/0 Assists: 0/0 Points: 0/0</p> | <p>20 Hannah Abraham (F/D) Goals: 3/7 Assists: 1/2 Points: 7/16</p> | <p>97 Dalanda Ouendeno (D) Goals: 0/0 Assists: 1/1 Points: 1/1</p> |
| <p>6 Heather Kaleiohi (F) Goals: 4/6 Assists: 1/3 Points: 9/15</p> | <p>13 Amanda Saymon (M) Goals: 0/0 Assists: 0/0 Points: 0/0</p> | <p>22 Alli Magaletta (M) Goals: 2/2 Assists: 2/2 Points: 6/6</p> | <p>99 Sh'Nia Gordon (F) Goals: 3/8 Assists: 2/5 Points: 8/21</p> |
| <p>7 Grace Cutler (F) Goals: 1/1 Assists: 0/0 Points: 2/2</p> | <p>14 Patricia Fernandez (M) Goals: 0/0 Assists: 0/0 Points: 0/0</p> | <p>24 Carly Black (D) Goals: 0/1 Assists: 1/5 Points: 1/7</p> | |

Mountaineer Numbers to Know

| | | | |
|---|---|--|---|
| <p><u>Team Season Highs</u> Points: 12 at Richmond (9/23) Goals: 4 at Richmond (9/23) Assists: 4 vs. Ohio State (9/4), at Richmond (9/23), vs. Oklahoma (10/2) Shots: 43 vs. Saint Francis (8/28) Shots on Goal: 17 vs. Saint Francis (8/28) Saves: 9 at Penn State (8/19) Corner Kicks: 14 at Kansas (10/7) Fouls: 15 at Duke (9/9)</p> | <p><u>Team Season Lows</u> Points: 0 vs. Georgetown (9/18) Goals: 0 vs. Georgetown (9/18) Assists: 0 (3 times) Shots: 14 at Penn State (8/19) Shots on Goal: 4 at Kansas (10/7) Saves: 0 vs. Purdue (9/1), vs. Ohio State (9/4) vs. Baylor (9/30) Corner Kicks: 2 vs. Clemson (8/26) Fouls: 4 vs. Saint Francis (8/28)</p> | <p><u>Opponent Season Highs</u> Points: 3 by Saint Francis (8/28), by Duke (9/9) Goals: 1 (6 times) Assists: 1 by Saint Francis (8/28), by Duke (9/9) Shots: 17 by Penn State (8/19) Shots on Goal: 10 by Penn State (8/19) Saves: 14 by Saint Francis (8/28) Corner Kicks: 5 by Clemson (8/26), by Georgetown (9/18) Fouls: 13 by Princeton (9/16), by Georgetown (9/18)</p> | <p><u>Opponent Season Lows</u> Points: 0 (7 times) Goals: 0 (7 times) Assists: 0 (10 times) Shots: 1 by Purdue (9/1) Shots on Goal: 0 by Purdue (9/1), by Baylor (9/30) Saves: 3 by Kansas (10/7) Corner Kicks: 0 by Purdue (9/1), by Kansas (10/7) Fouls: 4 by Saint Francis (8/28)</p> |
|---|---|--|---|

2016 Box Scores

Soccer Box Score (Final)

West Virginia University Women's Soccer

#6 West Virginia vs #2 Penn State (Aug 19, 2016 at University Park, Pa.)

West Virginia (0-0-1) vs.
Penn State (0-0-1)
Date: Aug 19, 2016 • Attendance: 5791
Weather: 81 degrees, sunny

| Goals by period | 1 | 2 | OT | O2 | Total |
|-----------------|---|---|----|----|-------|
| West Virginia | 0 | 1 | 0 | 0 | 1 |
| Penn State | 0 | 1 | 0 | 0 | 1 |

| Po # | Player | Sh | SO | G | A | Fo |
|-------------------|--------------------|----|----|---|---|----|
| gk 25 | Rylee Foster | - | - | - | - | - |
| d 4 | Bianca St. Georges | 2 | 1 | - | - | - |
| f 5 | Michaela Abam | 5 | 4 | 1 | - | - |
| m 10 | Carla Portillo | - | - | - | - | - |
| f 11 | A. Pierre-Louis | 1 | 1 | 1 | - | - |
| m 14 | Patricia Fernandez | - | - | - | - | - |
| d 16 | Easther Mayi Kith | - | - | - | - | - |
| d 20 | Hannah Abraham | - | - | - | - | - |
| m 22 | Alli Magaletta | 1 | - | - | - | - |
| d 24 | Carly Black | - | - | - | - | - |
| f 99 | Sh'Nia Gordon | 3 | 1 | - | - | - |
| -- Substitutes -- | | | | | | |
| 6 | Heather Kaleiohi | 1 | - | - | - | - |
| 7 | Grace Cutler | - | - | - | - | - |
| 18 | Ashley Woolpert | - | - | - | - | - |
| 26 | Vanessa Flores | 1 | - | - | 1 | - |
| Totals | | | | | | |

| Po # | Player | Sh | SO | G | A | Fo |
|-------------------|----------------------|----|----|---|---|----|
| gk 00 | Amanda Dennis | - | - | - | - | - |
| d 1 | Brittany Basinger | - | - | - | - | - |
| d 2 | Grace Fisk | 1 | 1 | - | - | - |
| f 4 | Megan Schafer | 4 | 2 | - | - | - |
| d 7 | Elizabeth Ball | 1 | 1 | - | - | - |
| f 9 | Frannie Crouse | 2 | 1 | - | - | - |
| m 12 | Charlotte Williams | 3 | 1 | - | - | - |
| m 15 | Haleigh Echard | 3 | 2 | - | - | - |
| d 17 | Alina Ortega Jurado | - | - | - | - | - |
| m 23 | Nickolette Driesse | 2 | 1 | - | - | - |
| m 27 | Marissa Sheva | - | - | - | - | - |
| -- Substitutes -- | | | | | | |
| 8 | Kristin Schnurr | - | - | - | - | - |
| 20 | Salina Williford | - | - | - | - | - |
| 21 | Laura Freigang | 1 | 1 | 1 | - | - |
| 25 | Taylor Campbell-Phip | - | - | - | - | - |
| 33 | Laura Suero | - | - | - | - | - |
| Totals | | | | | | |

| # | Goalkeepers | Min | GA | Saves |
|----|--------------|--------|----|-------|
| 25 | Rylee Foster | 110:00 | 1 | 9 |

| # | Goalkeepers | Min | GA | Saves |
|----|---------------|--------|----|-------|
| 00 | Amanda Dennis | 110:00 | 1 | 6 |

| Shots by period | 1 | 2 | OT | O2 | Total |
|-----------------|---|---|----|----|-------|
| West Virginia | 5 | 7 | 1 | 1 | 14 |
| Penn State | 5 | 6 | 4 | 2 | 17 |

| Saves by period | 1 | 2 | OT | O2 | Total |
|-----------------|---|---|----|----|-------|
| West Virginia | 3 | 3 | 0 | 0 | 9 |
| Penn State | 4 | 2 | 0 | 0 | 6 |

| Corner kicks | 1 | 2 | OT | O2 | Total |
|---------------|---|---|----|----|-------|
| West Virginia | 0 | 2 | 0 | 2 | 4 |
| Penn State | 2 | 0 | 0 | 1 | 3 |

| Fouls | 1 | 2 | OT | O2 | Total |
|---------------|---|---|----|----|-------|
| West Virginia | 1 | 5 | 2 | 1 | 9 |
| Penn State | 3 | 0 | 0 | 3 | 6 |

Scoring summary:

| No. | Time | Team | Goal scorer | Assist | Description |
|-----|-------|------|--------------------|----------------|--|
| 1. | 50:50 | PSU | Laura Freigang (1) | (unassisted) | 16 yards out, center, hit left post and in |
| 2. | 76:59 | WVU | Michaela Abam (1) | Vanessa Flores | 6 yards out, from left side of the box, and keeper |

Cautions and ejections:

YC-WVU #16 (98:06)
West Virginia-Rylee Foster (0-0-1). Penn State-Amanda Dennis (0-0-1).
Stadium: Jeffrey Field
Officials: Referee: Ron Dambrosia; Asst. Referee: Robert Sheker; Paul Wehrman;
Alt. Official: Kyle Petty; Scorer: Will Rottler;
Offsides: West Virginia 5, Penn State 3.

Official's signature

Soccer Box Score (Final)

West Virginia University Women's Soccer

#6 West Virginia vs Buffalo (Aug 21, 2016 at University Park, Pa.)

West Virginia (1-0-1) vs.
Buffalo (0-2-0)
Date: Aug 21, 2016 • Attendance:
Weather: 72, rainy

| Goals by period | 1 | 2 | Total |
|-----------------|---|---|-------|
| West Virginia | 1 | 1 | 2 |
| Buffalo | 0 | 0 | 0 |

| Po # | Player | Sh | SO | G | A | Fo |
|-------------------|--------------------|----|----|---|---|----|
| gk 25 | Rylee Foster | - | - | - | - | - |
| d 4 | Bianca St. Georges | 1 | - | - | - | - |
| f 5 | Michaela Abam | 5 | 1 | - | - | - |
| m 10 | Carla Portillo | - | - | - | - | - |
| f 11 | A. Pierre-Louis | 3 | - | 1 | - | - |
| d 16 | Easther Mayi Kith | - | - | - | - | - |
| d 20 | Hannah Abraham | 2 | 1 | - | - | - |
| m 22 | Alli Magaletta | - | - | - | - | - |
| d 24 | Carly Black | 1 | - | - | - | - |
| m 26 | Vanessa Flores | 1 | - | - | - | - |
| f 99 | Sh'Nia Gordon | 3 | - | 1 | - | - |
| -- Substitutes -- | | | | | | |
| 1 | Michelle Newhouse | - | - | - | - | - |
| 2 | Jade Gentile | 1 | 1 | - | - | - |
| 6 | Heather Kaleiohi | 5 | 2 | 1 | - | - |
| 7 | Grace Cutler | 3 | 1 | 1 | - | - |
| 12 | Macy Stalnaker | - | - | - | - | - |
| 14 | Patricia Fernandez | - | - | - | - | - |
| 18 | Ashley Woolpert | 1 | - | - | - | - |
| Totals | | | | | | |

| Po # | Player | Sh | SO | G | A | Fo |
|-------------------|-------------------|----|----|---|---|----|
| gk 1 | Laura Dougall | - | - | - | - | - |
| m 2 | Adrianna Vancuyck | - | - | - | - | - |
| d 4 | Anjel Hart | - | - | - | - | - |
| d 5 | Gurjeena Jandu | - | - | - | - | - |
| m 6 | Julia Benati | - | - | - | - | - |
| f 7 | Rebecca Bramble | - | - | - | - | - |
| f 8 | Carissima Cutrona | 1 | 1 | - | - | - |
| m 13 | Moir Petrie | - | - | - | - | - |
| f 14 | Celina Carrero | 1 | - | - | - | - |
| m 24 | Andrea Nipper | 1 | - | - | - | - |
| d 25 | Nicole Gerritz | - | - | - | - | - |
| -- Substitutes -- | | | | | | |
| 0 | Cassie Betancourt | - | - | - | - | - |
| 9 | Jessica Marlowe | - | - | - | - | - |
| 10 | Dana Lytle | - | - | - | - | - |
| 11 | Kara Daly | - | - | - | - | - |
| 16 | Carley Zocall | - | - | - | - | - |
| 17 | Meghan Simmons | - | - | - | - | - |
| Totals | | | | | | |

| # | Goalkeepers | Min | GA | Saves |
|----|-------------------|-------|----|-------|
| 25 | Rylee Foster | 72:29 | 0 | 0 |
| 1 | Michelle Newhouse | 17:31 | 0 | 1 |

| # | Goalkeepers | Min | GA | Saves |
|---|-------------------|-------|----|-------|
| 1 | Laura Dougall | 45:00 | 1 | 2 |
| 0 | Cassie Betancourt | 45:00 | 1 | 2 |

| Shots by period | 1 | 2 | Total |
|-----------------|----|----|-------|
| West Virginia | 14 | 12 | 26 |
| Buffalo | 0 | 3 | 3 |

| Saves by period | 1 | 2 | Total |
|-----------------|---|---|-------|
| West Virginia | 0 | 1 | 1 |
| Buffalo | 2 | 2 | 4 |

| Corner Kicks | 1 | 2 | Total |
|---------------|---|---|-------|
| West Virginia | 9 | 3 | 12 |
| Buffalo | 0 | 1 | 1 |

Scoring summary:

| No. | Time | Team | Goal scorer | Assist | Description |
|-----|-------|------|----------------------|-----------------|--|
| 1. | 21:27 | WVU | Heather Kaleiohi (1) | A. Pierre-Louis | cross from 11 from midfield into box, 6 fr yards out, right side |
| 2. | 67:25 | WVU | Grace Cutler (1) | Sh'Nia Gordon | 7 from 99, six yards out, bottom-left corn |

Cautions and ejections:

Win-Rylee Foster (1-0-1). Loss-Laura Dougall (0-2-0).
Stadium: Jeffrey Field
Officials: Referee: John McCloskey; Asst. Referee: Bruce Shanaman; Kyle Petty;
Alt. Official: Tim Deljanovan; Scorer: Will Rottler;
Offsides: West Virginia 0, Buffalo 3.

Official's signature

Soccer Box Score (Final)

West Virginia University Women's Soccer

#8 Clemson vs #6 West Virginia (Aug 26, 2016 at Morgantown, W.Va.)

Clemson (2-1) vs.
West Virginia (2-0-1)
Date: Aug 26, 2016 • Attendance: 2019
Weather: Hot, muggy

| Goals by period | 1 | 2 | Total |
|-----------------|---|---|-------|
| Clemson | 0 | 0 | 0 |
| West Virginia | 0 | 1 | 1 |

| Po # | Player | Sh | SO | G | A | Fo |
|-------------------|------------------|----|----|---|---|----|
| gk 1 | Kailen Sheridan | - | - | - | - | - |
| d 4 | Katie Sprouse | 1 | - | - | - | - |
| d 5 | Claire Wagner | - | - | - | - | - |
| m 7 | Shannon Horgan | 1 | 1 | - | - | - |
| m 11 | Catrina Atanda | 1 | - | - | - | - |
| d 15 | Sam Staab | 1 | 1 | - | - | - |
| m 16 | Julia Mackin | - | - | - | - | - |
| m 20 | Jenna Weston | - | - | - | - | - |
| m 21 | Abby Jones | - | - | - | - | - |
| d 27 | Gabby Byorth | - | - | - | - | - |
| d 28 | Emily Byorth | - | - | - | - | - |
| -- Substitutes -- | | | | | | |
| 2 | Miranda Weslake | - | - | - | - | - |
| 3 | Mac Smith | - | - | - | - | - |
| 8 | Paige Reckert | - | - | - | - | - |
| 9 | Sarah Osborne | - | - | - | - | - |
| 10 | Alana Hockenhill | - | - | - | - | - |
| 14 | Allie Kington | - | - | - | - | - |
| 19 | Jenna Polonsky | - | - | - | - | - |
| 23 | Tori Andreski | - | - | - | - | - |
| Totals | | | | | | |

| Po # | Player | Sh | SO | G | A | Fo |
|-------------------|-------------------|----|----|---|---|----|
| gk 25 | Rylee Foster | - | - | - | - | - |
| f 5 | Michaela Abam | 4 | 2 | - | - | - |
| m 9 | Ashley Lawrence | 3 | 1 | - | - | - |
| m 10 | Carla Portillo | - | - | - | - | - |
| d 11 | A. Pierre-Louis | 4 | 2 | 1 | - | - |
| d 16 | Easther Mayi Kith | - | - | - | - | - |
| f 20 | Hannah Abraham | 1 | - | - | - | - |
| m 22 | Alli Magaletta | - | - | - | - | - |
| d 24 | Carly Black | - | - | - | - | - |
| d 88 | Kadeisha Buchanan | 1 | - | - | - | - |
| f 99 | Sh'Nia Gordon | 4 | 2 | - | - | - |
| -- Substitutes -- | | | | | | |
| 2 | Jade Gentile | 1 | 1 | - | - | - |
| 7 | Grace Cutler | - | - | - | - | - |
| 18 | Ashley Woolpert | - | - | - | - | - |
| 26 | Vanessa Flores | - | - | - | - | - |
| Totals | | | | | | |

| # | Goalkeepers | Min | GA | Saves |
|---|-----------------|-------|----|-------|
| 1 | Kailen Sheridan | 90:00 | 1 | 7 |

| # | Goalkeepers | Min | GA | Saves |
|----|--------------|-------|----|-------|
| 25 | Rylee Foster | 90:00 | 0 | 2 |

| Shots by period | 1 | 2 | Total |
|-----------------|---|---|-------|
| Clemson | 3 | 3 | 6 |
| West Virginia | 9 | 9 | 18 |

| Saves by period | 1 | 2 | Total |
|-----------------|---|---|-------|
| Clemson | 5 | 2 | 7 |
| West Virginia | 0 | 2 | 2 |

| Corner kicks | 1 | 2 | Total |
|---------------|---|---|-------|
| Clemson | 2 | 3 | 5 |
| West Virginia | 2 | 0 | 2 |

| Fouls | 1 | 2 | Total |
|---------------|---|---|-------|
| Clemson | 4 | 3 | 7 |
| West Virginia | 4 | 5 | 9 |

Scoring summary:

| No. | Time | Team | Goal scorer | Assist | Description |
|-----|-------|------|---------------------|--------------|--|
| 1. | 56:55 | WVU | A. Pierre-Louis (1) | (unassisted) | dribbles through crowd, sends shot toward right post |

Cautions and ejections:

Win-Rylee Foster (2-0-1). Loss-Kailen Sheridan (0-1).
Stadium: Dick Dlesk Stadium
Officials: Referee: Corey Rockwell; Asst. Referee: Tom Janjacek; Ron Dambrosia;
Alt. Official: Devon Duling; Timekeeper: Samantha Strejcek; Scorer: Shannon McNamara;
Offsides: Clemson 3, West Virginia 0.

Official's signature

Soccer Box Score (Final)

West Virginia University Women's Soccer

Saint Francis vs #6 West Virginia (Aug 28, 2016 at Morgantown, W.Va.)

Saint Francis (0-4) vs.
West Virginia (3-0-1)
Date: Aug 28, 2016 • Attendance: 682
Weather: Hot, sunny and muggy

| Goals by period | 1 | 2 | Total |
|-----------------|---|---|-------|
| Saint Francis | 1 | 0 | 1 |
| West Virginia | 1 | 2 | 3 |

| Po # | Player | Sh | SO | G | A | Fo |
|-------------------|-------------------|----|----|---|---|----|
| gk 1 | HERNAN, Julia | - | - | - | - | - |
| m 2 | HARDIN, Leah | - | - | - | - | - |
| f 4 | GALLAHER, CASEY | - | - | - | - | - |
| d 9 | MORALES, Gabi | - | - | - | - | - |
| d 10 | BROSS, Siobhan | - | - | - | - | - |
| m 13 | SULER, Sara | 1 | 1 | 1 | - | - |
| f 14 | McGHEE, Alyssa | - | - | - | - | - |
| f 17 | TAROSKY, Abigail | - | - | - | - | - |
| d 22 | McGINNIS, Shannon | 1 | 1 | 1 | - | - |
| f 24 | LaDUKE, Allison | - | - | - | - | - |
| d 28 | MILTON, Shelby | - | - | - | - | - |
| -- Substitutes -- | | | | | | |
| 6 | K | | | | | |

2016 Box Scores

Soccer Box Score (Final) West Virginia University Women's Soccer PURDUE vs #4 West Virginia (Sep 1, 2016 at Morgantown, W.Va.)

PURDUE (2-3) vs.
West Virginia (4-0-1)
Date: Sep 1, 2016 • Attendance: 1320
Weather: Warm, light breeze

| PURDUE | Sh | SO | G | A | Fo |
|------------------------|----|----|---|---|----|
| gk 00 YOHN, Erika | - | - | - | - | - |
| f 11 LEINERT, Hannah | - | - | - | - | - |
| m 16 ROBBINS, Breana | - | - | - | - | - |
| d 17 KOROLAS, Vanessa | - | - | - | - | - |
| m 19 PETRINA, Andrea | - | - | - | - | - |
| d 20 WILLIAMS, Dannah | - | - | - | - | - |
| d 21 MUSSALLEM, Hannah | - | - | - | - | - |
| f 22 BITTNER, Katie | 1 | - | - | - | - |
| m 27 SZALACH, Christa | - | - | - | - | - |
| d 33 LAMERE, Gabby | - | - | - | - | - |
| d 35 LASKY, Mikayla | - | - | - | - | - |
| -- Substitutes -- | - | - | - | - | - |
| 2 MILARO, Gianna | - | - | - | - | - |
| 4 KASER, Megan | - | - | - | - | - |
| 7 RILEY, Brady | - | - | - | - | - |
| 10 SABANAGIC, Ena | - | - | - | - | - |
| 18 OLSON, Dagny | - | - | - | - | - |
| 25 DUNCAN, Maddy | - | - | - | - | - |
| Totals | 1 | 0 | 0 | 0 | 7 |

| # Goalkeepers | Min | GA | Saves |
|----------------|-------|----|-------|
| 00 YOHN, Erika | 90:00 | 2 | 9 |
| TM TEAM | 0:00 | 0 | 1 |

| Shots by period | 1 | 2 | Total |
|-----------------|---|----|-------|
| PURDUE | 0 | 1 | 1 |
| West Virginia | 9 | 20 | 29 |

| Corner kicks | 1 | 2 | Total |
|---------------|---|---|-------|
| PURDUE | 0 | 0 | 0 |
| West Virginia | 6 | 4 | 10 |

Scoring summary:

| No. | Time | Team | Goal scorer | Assist | Description |
|-----|-------|------|----------------------|-----------------|---|
| 1. | 65:12 | WVU | Heather Kaleiohi (2) | Dalanda Ouedeno | Jumped on ball in front of net, sent low sh |
| 2. | 69:51 | WVU | Michaela Abam (2) | Carla Portillo | Got ball out wide, high shot out of reach o |

Cautions and ejections:

YC-PUR #11 (30:38); YC-PUR #7 (72:56)

Win-Rylee Foster (3-0-1). Loss-YOHN, Erika (1-1).

Stadium: Dick Diesk Stadium

Officials: Referee: Shane Butler; Asst. Referee: Paul Deverse; Tom Manspeaker;

Alt. Official: Brian Opiela; Timekeeper: Chris Pharis; Scorer: Shannon McNamara;

Offsides: PURDUE 0, West Virginia 0.

Official's signature

Soccer Box Score (Final) West Virginia University Women's Soccer #19 OHIO STATE vs #4 West Virginia (Sep 04, 2016 at Morgantown, W.Va.)

OHIO STATE (5-1) vs.
West Virginia (5-0-1)
Date: Sep 04, 2016 • Attendance: 1763
Weather: Sunny, 82 temp

| OHIO STATE | Sh | SO | G | A | Fo |
|--------------------------|----|----|---|---|----|
| gk 0 McVicker, Jillian | - | - | - | - | - |
| d 3 Miyashiro, Nicole | - | - | - | - | - |
| m 4 Watts, Nikki | - | - | - | - | - |
| f 7 Prince, Nichelle | 1 | - | - | - | - |
| m 9 Firenze, Emma | - | - | - | - | - |
| m 10 Roberts, Sarah | - | - | - | - | - |
| d 17 Skinner, Bridget | - | - | - | - | - |
| f 20 Agnew, Lindsay | 2 | 1 | 1 | - | - |
| d 22 Knighth, Kylie | - | - | - | - | - |
| d 23 Walker-Robinson, H. | - | - | - | - | - |
| d 33 Wolcott, Morgan | - | - | - | - | - |
| -- Substitutes -- | - | - | - | - | - |
| 2 Watts, Bryce | - | - | - | - | - |
| 5 Holden, Arden | - | - | - | - | - |
| 6 Kammerdeiner, Megh | 1 | - | - | - | - |
| 13 Mousset, Marikne | - | - | - | - | - |
| 18 Patton, Caitlyn | - | - | - | - | - |
| 19 Edwards, Sammy | - | - | - | - | - |
| Totals | 4 | 1 | 1 | 0 | 6 |

| # Goalkeepers | Min | GA | Saves |
|---------------------|-------|----|-------|
| 0 McVicker, Jillian | 90:00 | 2 | 5 |

| Shots by period | 1 | 2 | Total |
|-----------------|---|----|-------|
| OHIO STATE | 0 | 4 | 4 |
| West Virginia | 9 | 10 | 19 |

| Corner kicks | 1 | 2 | Total |
|---------------|---|---|-------|
| OHIO STATE | 0 | 3 | 3 |
| West Virginia | 5 | 3 | 8 |

Scoring summary:

| No. | Time | Team | Goal scorer | Assist | Description |
|-----|-------|------|----------------------|--|--|
| 1. | 19:38 | WVU | Heather Kaleiohi (3) | Alli Magaletta Carla Portillo (unassisted) | short pass in front of net, puts ball behind |
| 2. | 69:35 | OSU | Agnew, Lindsay (4) | (unassisted) | steals clearance, goes 1v1 and beats gk w shot |
| 3. | 76:01 | WVU | Hannah Abraham (1) | Michaela Abam Carla Portillo | Header in front of net, sends far left post |

Cautions and ejections:

Win-Rylee Foster (4-0-1). Loss-McVicker, Jillian (5-1).

Stadium: Dick Diesk Stadium

Officials: Referee: Mark Kadlecik; Asst. Referee: Ross Kleintuber; Charles Murphy;

Alt. Official: Paul Deverse; Timekeeper: Samantha Strejck; Scorer: Shannon McNamara;

Offsides: OHIO STATE 2, West Virginia 0.

Official's signature

Soccer Box Score (Final) West Virginia University Women's Soccer West Virginia vs #6/6 Duke (Sep 09, 2016 at Durham, N.C.)

West Virginia (6-0-1) vs.
#6/6 Duke (4-2-1)
Date: Sep 09, 2016 • Attendance: 1860
Weather: 88 degrees, partly cloudy

| West Virginia | Sh | SO | G | A | Fo |
|-------------------------|----|----|---|---|----|
| gk 11 Michelle Newhouse | - | - | - | - | - |
| f 5 Michaela Abam | 3 | 2 | 2 | - | - |
| f 6 Heather Kaleiohi | 1 | 1 | - | - | - |
| mf 9 Ashley Lawrence | 1 | 1 | - | - | - |
| mf 10 Carla Portillo | 1 | - | - | - | - |
| d 11 A. Pierre-Louis | 4 | 2 | 1 | - | - |
| d 16 Easther Mayi Kith | - | - | - | - | - |
| mf 22 Alli Magaletta | 3 | - | - | - | - |
| mf 26 Vanessa Flores | - | - | - | - | - |
| d 88 Kadeisha Buchanan | 1 | 1 | - | - | - |
| f 99 Sh'Nia Gordon | 2 | - | - | - | - |
| -- Substitutes -- | - | - | - | - | - |
| 7 Grace Cutler | - | - | - | - | - |
| 18 Ashley Woolpert | - | - | - | - | - |
| 20 Hannah Abraham | - | - | - | - | - |
| Totals | 16 | 7 | 3 | 0 | 15 |

| # Goalkeepers | Min | GA | Saves |
|---------------------|-------|----|-------|
| 1 Michelle Newhouse | 90:00 | 1 | 2 |

| Shots by period | 1 | 2 | Total |
|-----------------|----|---|-------|
| West Virginia | 11 | 5 | 16 |
| #6/6 Duke | 1 | 7 | 8 |

| Corner kicks | 1 | 2 | Total |
|---------------|---|---|-------|
| West Virginia | 2 | 1 | 3 |
| #6/6 Duke | 0 | 3 | 3 |

Scoring summary:

| No. | Time | Team | Goal scorer | Assist | Description |
|-----|-------|------|---------------------|----------------|--|
| 1. | 37:58 | WVU | A. Pierre-Louis (2) | (unassisted) | blast from 20 yards off goalkeepers hands goal |
| 2. | 49:35 | WVU | Michaela Abam (3) | (unassisted) | blast over goalkeeper head from 32 yards |
| 3. | 65:37 | DU | Ashton Miller (2) | Olivia Erlbeck | header off of a free kick from 8 yards |
| 4. | 79:05 | WVU | Michaela Abam (4) | Penalty kick | |

Cautions and ejections:

YC-DU #7 (47:47); YC-WVU #99 (80:03); YC-WVU #TM (80:28); YC-DU #TM (85:05)

Win-Michelle Newhouse (2-0-0). Loss-EJ Proctor (4-2-1).

Stadium: Koskinen Stadium

Officials: Referee: Carmen Serbio; Asst. Referee: Michael Hill; Jeremy L.B. Smith;

Alt. Official: Austin Tucker; Timekeeper: Alan Riggsbee; Scorer: Carley Mulligan;

Offsides: West Virginia 1, #6/6 Duke 4.

Official's signature

Soccer Box Score (Final) West Virginia University Women's Soccer PRINCETON vs #1 West Virginia (Sep 16, 2016 at Morgantown, W.Va.)

PRINCETON (6-1) vs.
West Virginia (7-0-1)
Date: Sep 16, 2016 • Attendance: 1946
Weather: Nice, slight breeze, 81 at kick

| PRINCETON | Sh | SO | G | A | Fo |
|--------------------------|----|----|---|---|----|
| gk 28 Grossi, Natalie | - | - | - | - | - |
| m 4 Gregoire, Vanessa | 3 | 2 | - | - | - |
| m 5 Larkin, Natalie | - | - | - | - | - |
| m 7 McDonough, Samant | - | - | - | - | - |
| f 9 Lussi, Tyler | 4 | 1 | - | - | - |
| d 10 Symanovich, Mikaela | - | - | - | - | - |
| m 11 Loncar, Nicole | - | - | - | - | - |
| d 17 Sheppard, Olivia | - | - | - | - | - |
| f 19 Asom, Mimi | - | - | - | - | - |
| m 23 Hilliard, Emily | - | - | - | - | - |
| d 27 McDonough, Jesse | 1 | 1 | - | - | - |
| -- Substitutes -- | - | - | - | - | - |
| 2 Kennedy, Tomi | - | - | - | - | - |
| 3 Stella, Beth | - | - | - | - | - |
| 7 Grace Cutler | - | - | - | - | - |
| 12 Macy Stalaker | - | - | - | - | - |
| 16 Givens, Abby | - | - | - | - | - |
| 18 Azermadhi, Alessia | 1 | 1 | - | - | - |
| 20 O'Brien, Courtney | - | - | - | - | - |
| 25 Gulati, Sophia | - | - | - | - | - |
| Totals | 9 | 5 | 0 | 0 | 13 |

| # Goalkeepers | Min | GA | Saves |
|--------------------|-------|----|-------|
| 28 Grossi, Natalie | 90:00 | 3 | 5 |
| TM TEAM | 0:00 | 0 | 2 |

| Shots by period | 1 | 2 | Total |
|-----------------|----|---|-------|
| PRINCETON | 5 | 4 | 9 |
| West Virginia | 12 | 8 | 20 |

| Corner kicks | 1 | 2 | Total |
|---------------|---|---|-------|
| PRINCETON | 0 | 2 | 2 |
| West Virginia | 3 | 2 | 5 |

Scoring summary:

| No. | Time | Team | Goal scorer | Assist | Description |
|-----|-------|------|---------------------|----------------------------------|---|
| 1. | 40:55 | WVU | Alli Magaletta (1) | Ashley Woolpert | Scrum inside box, puts toward right corner |
| 2. | 51:01 | WVU | Michaela Abam (5) | Sh'Nia Gordon A. Pierre-Louis | Gets ball at far right post, easily scores in front of line |
| 3. | 57:04 | WVU | Ashley Lawrence (1) | Penalty kick | |

Cautions and ejections:

Win-Michelle Newhouse (3-0-0). Loss-Grossi, Natalie (6-1).

Stadium: Dick Diesk Stadium

Officials: Referee: Peter Dhima; Asst. Referee: Chris O'Haire; Jose J. Da Silva;

Alt. Official: Ron Dambrosia; Timekeeper: Samantha Strejck; Scorer: Shannon McNamara;

Offsides: PRINCETON 1, West Virginia 2.

Official's signature

2016 Box Scores

Soccer Box Score (Final) West Virginia University Women's Soccer #9 GEORGETOWN vs #1 West Virginia (Sep 18, 2016 at Morgantown, W.Va.)

GEORGETOWN (8-1) vs.
West Virginia (7-1-1)
Date: Sep 18, 2016 • Attendance: 1402
Weather: Damp, light rain off and on

| Po # | Player | Sh | SO | G | A | Fo |
|-------------------|--------------------|----|----|---|---|----|
| gk 1 | SCHECHTMAN, Ariell | - | - | - | - | - |
| d 3 | TOPOR, Drew | - | - | - | - | - |
| d 4 | WENGER, Elizabeth | - | - | - | - | - |
| d 5 | PAUL, Marina | 1 | 1 | - | - | - |
| d 8 | DELANEY, Corey | - | - | - | - | - |
| f 9 | THOMAS, Crystal | 2 | - | - | - | - |
| m 10 | CORBOZ, Rachel | - | - | - | - | - |
| m 13 | PAK, Taylor | - | - | - | - | - |
| m 14 | KNOTT, Chloe | 1 | - | - | - | - |
| f 18 | FARRELL, Caitlin | 1 | - | - | - | - |
| f 21 | DAMASKA, Grace | 2 | 2 | 1 | - | - |
| -- Substitutes -- | | | | | | |
| 11 | GERMINO-WATNICK, | - | - | - | - | - |
| 16 | NIZIALEK, Carson | - | - | - | - | - |
| 19 | WILLIAMS, Vashli | - | - | - | - | - |
| 23 | NALLY, Meaghan | 1 | 1 | - | - | - |
| Totals | | | | | | |

| # | Goalkeepers | Min | GA | Saves |
|---|---------------------|--------|----|-------|
| 1 | SCHECHTMAN, Arielle | 101:38 | 0 | 8 |

| Shots by period | 1 | 2 | OT | O2 | Total |
|-----------------|----|---|----|----|-------|
| GEORGETOWN | 4 | 2 | 0 | 0 | 2 |
| West Virginia | 11 | 8 | 4 | 0 | 23 |

| Corner kicks | 1 | 2 | OT | O2 | Total |
|---------------|---|---|----|----|-------|
| GEORGETOWN | 3 | 2 | 0 | 0 | 5 |
| West Virginia | 5 | 3 | 1 | 0 | 9 |

Scoring summary:

| No. | Time | Team | Goal scorer | Assist | Description |
|-----|--------|------|--------------------|--------------|---|
| 1. | 101:38 | GU | DAMASKA, Grace (8) | (unassisted) | Takes ball up left side of field, sends long toward far right pos |

Cautions and ejections:

Win-SCHECHTMAN, Arielle (8-1). Loss-Rylee Foster (4-1-1).

Stadium: Dick Dlesk Stadium

Officials: Referee: Margaret Domka; Asst. Referee: Pete Lubinsky; Tom Manspeaker;

Alt. Official: Williams Paul; Timekeeper: Samantha Strejcek; Scorer: Shannon McNamara;

Offsides: GEORGETOWN 1, West Virginia 1.

Official's signature

| Goals by period | 1 | 2 | OT | O2 | Total |
|-----------------|---|---|----|----|-------|
| GEORGETOWN | 0 | 0 | 0 | 1 | 1 |
| West Virginia | 0 | 0 | 0 | 0 | 0 |

| Po # | Player | Sh | SO | G | A | Fo |
|-------------------|--------------------|----|----|---|---|----|
| gk 25 | Rylee Foster | - | - | - | - | - |
| f 5 | Michaela Abam | 6 | - | - | - | - |
| f 6 | Heather Kaleiohi | 4 | 2 | - | - | - |
| d 9 | Ashley Lawrence | 1 | 1 | - | - | - |
| m 10 | Carla Portillo | - | - | - | - | - |
| d 11 | A. Pierre-Louis | 3 | 1 | - | - | - |
| d 16 | Easther Mayli Kith | - | - | - | - | - |
| m 22 | Alli Magaletta | 1 | 1 | - | - | - |
| m 26 | Vanessa Flores | - | - | - | - | - |
| d 88 | Kadeisha Buchanan | 2 | - | - | - | - |
| f 99 | Sh'Nia Gordon | 5 | 3 | - | - | - |
| -- Substitutes -- | | | | | | |
| 4 | Bianca St. Georges | - | - | - | - | - |
| 7 | Grace Cutler | 1 | - | - | - | - |
| 18 | Ashley Woolpert | - | - | - | - | - |
| 20 | Hannah Abraham | - | - | - | - | - |
| Totals | | | | | | |

| # | Goalkeepers | Min | GA | Saves |
|----|--------------|--------|----|-------|
| 25 | Rylee Foster | 101:38 | 1 | 3 |

| Saves by period | 1 | 2 | OT | O2 | Total |
|-----------------|---|---|----|----|-------|
| GEORGETOWN | 5 | 3 | 0 | 0 | 8 |
| West Virginia | 2 | 1 | 0 | 0 | 3 |

| Fouls | 1 | 2 | OT | O2 | Total |
|---------------|---|---|----|----|-------|
| GEORGETOWN | 4 | 6 | 3 | 0 | 13 |
| West Virginia | 5 | 5 | 0 | 0 | 10 |

Soccer Box Score (Final) West Virginia University Women's Soccer #4 West Virginia vs Richmond (Sep 23, 2016 at Richmond, Va.)

West Virginia (8-1-1) vs.
Richmond (5-3-1)
Date: Sep 23, 2016 • Attendance: 647
Weather: 75 degrees, clear skies

| Po # | Player | Sh | SO | G | A | Fo |
|-------------------|--------------------|----|----|---|---|----|
| gk 25 | Rylee Foster | - | - | - | - | - |
| d 4 | Bianca St. Georges | - | - | - | 1 | - |
| f 5 | Michaela Abam | 2 | 2 | - | - | - |
| f 6 | Heather Kaleiohi | 3 | 2 | 1 | - | - |
| m 9 | Ashley Lawrence | 5 | 1 | - | 1 | - |
| m 10 | Carla Portillo | 1 | 1 | - | - | - |
| d 11 | A. Pierre-Louis | - | - | - | - | - |
| d 16 | Easther Mayli Kith | - | - | - | - | - |
| d 16 | Easther Mayli Kith | - | - | - | - | - |
| m 22 | Alli Magaletta | 2 | 1 | - | - | - |
| d 88 | Kadeisha Buchanan | - | - | - | - | - |
| f 99 | Sh'Nia Gordon | 5 | - | - | - | - |
| -- Substitutes -- | | | | | | |
| 7 | Grace Cutler | - | - | - | - | - |
| 14 | Patricia Fernandez | - | - | - | - | - |
| 18 | Ashley Woolpert | 1 | 1 | - | 1 | - |
| 20 | Hannah Abraham | 3 | 2 | 1 | - | - |
| 23 | Jade Gentile | 1 | 1 | - | - | - |
| 24 | Carly Black | - | - | - | 1 | - |
| 97 | Dalanda Quendeno | - | - | - | - | - |
| Totals | | | | | | |

| # | Goalkeepers | Min | GA | Saves |
|----|--------------|-------|----|-------|
| 25 | Rylee Foster | 90:00 | 1 | 6 |

| Shots by period | 1 | 2 | Total |
|-----------------|----|---|-------|
| West Virginia | 14 | 9 | 23 |
| Richmond | 4 | 7 | 11 |

| Corner kicks | 1 | 2 | Total |
|---------------|---|---|-------|
| West Virginia | 5 | 4 | 9 |
| Richmond | 1 | 1 | 2 |

Scoring summary:

| No. | Time | Team | Goal scorer | Assist | Description |
|-----|-------|------|-----------------------|--------------------|-------------|
| 1. | 0:47 | WVU | Heather Kaleiohi (4) | Bianca St. Georges | |
| 2. | 41:33 | WVU | Hannah Abraham (2) | Ashley Woolpert | |
| 3. | 55:07 | UR | CARRIGAN, Meaghan (7) | Penalty kick | |
| 4. | 56:14 | WVU | Carla Portillo (1) | Ashley Lawrence | |
| 5. | 84:33 | WVU | Jade Gentile (1) | Carly Black | |

Cautions and ejections:

Win-Rylee Foster (5-1-1). Loss-BLESSING, Carlie (1-1-1).

Stadium: Robins Stadium

Officials: Referee: Mark Gorak; Asst. Referee: Ryan White; Corie Cox; Scorer: Scott Day;

Offsides: West Virginia 2, Richmond 2.

Official's signature

| Goals by period | 1 | 2 | Total |
|-----------------|---|---|-------|
| West Virginia | 2 | 2 | 4 |
| Richmond | 0 | 1 | 1 |

| Po # | Player | Sh | SO | G | A | Fo |
|-------------------|-------------------|----|----|---|---|----|
| gk 0 | BLESSING, Carlie | - | - | - | - | - |
| b 2 | BELLI, Lindsay | - | - | - | - | - |
| f 5 | CARRIGAN, Meaghan | 1 | 1 | 1 | - | - |
| b 7 | GROSS, Ashley | - | - | - | - | - |
| f 10 | PRILLAMAN, Lexi | 5 | 4 | - | - | - |
| f 11 | WALKER, Alyssa | - | - | - | - | - |
| m 13 | AHA, Olivia | 1 | 1 | - | - | - |
| b 15 | PRINGLE, Alexis | 1 | - | - | - | - |
| m 19 | WILLIAMS, Lindsay | 2 | 1 | - | - | - |
| b 21 | DRUMMOND, Emily | - | - | - | - | - |
| m 23 | EGBERS, Lindsay | 1 | - | - | - | - |
| -- Substitutes -- | | | | | | |
| 8 | CRISTIAN, Bailey | - | - | - | - | - |
| 12 | ROONEY, Hunter | - | - | - | - | - |
| 14 | CORNMAN, Hannah | - | - | - | - | - |
| 25 | BEAM, Brooke | - | - | - | - | - |
| Totals | | | | | | |

| # | Goalkeepers | Min | GA | Saves |
|---|------------------|-------|----|-------|
| 0 | BLESSING, Carlie | 90:00 | 4 | 7 |

| Saves by period | 1 | 2 | Total |
|-----------------|---|---|-------|
| West Virginia | 3 | 3 | 6 |
| Richmond | 5 | 2 | 7 |

| Fouls | 1 | 2 | Total |
|---------------|---|---|-------|
| West Virginia | 6 | 4 | 10 |
| Richmond | 2 | 9 | 11 |

Soccer Box Score (Final) West Virginia University Women's Soccer Baylor vs #3 West Virginia (Sep 30, 2016 at Morgantown, W.Va.)

Baylor (8-4-1, 1-1-1) vs.
West Virginia (9-1-1, 1-0)
Date: Sep 30, 2016 • Attendance: 1374
Weather:

| Po # | Player | Sh | SO | G | A | Fo |
|-------------------|----------------------|----|----|---|---|----|
| gk 1 | Martinson, Sara | - | - | - | - | - |
| f 2 | Akanyirige, Precious | - | - | - | - | - |
| d 3 | Ross, Kylie | - | - | - | - | - |
| d 4 | Cason, Emory | - | - | - | - | - |
| d 12 | Burns, Lindsay | - | - | - | - | - |
| f 13 | Piercy, Lauren | 1 | - | - | - | - |
| m 19 | King, Sarah | 2 | - | - | - | - |
| m 20 | James, Julie | - | - | - | - | - |
| d 21 | Schwartz, Caitlin | - | - | - | - | - |
| m 22 | Hamway, Bridget | - | - | - | - | - |
| f 33 | Padgett, Raegan | - | - | - | - | - |
| -- Substitutes -- | | | | | | |
| 00 | Leach, Ariel | - | - | - | - | - |
| 16 | York, Ashley | - | - | - | - | - |
| 23 | Sullivan, Marissa | - | - | - | - | - |
| 42 | Hoglund, Amanda | - | - | - | - | - |
| 44 | Sowinski, Halee | - | - | - | - | - |
| 77 | De Lima, Aline | 1 | - | - | - | - |
| Totals | | | | | | |

| # | Goalkeepers | Min | GA | Saves |
|---|-----------------|-------|----|-------|
| 1 | Martinson, Sara | 90:00 | 2 | 5 |

| Shots by period | 1 | 2 | Total |
|-----------------|----|----|-------|
| Baylor | 1 | 3 | 4 |
| West Virginia | 10 | 10 | 20 |

| Corner kicks | 1 | 2 | Total |
|---------------|---|---|-------|
| Baylor | 0 | 1 | 1 |
| West Virginia | 4 | 5 | 9 |

Scoring summary:

| No. | Time | Team | Goal scorer | Assist | Description |
|-----|-------|------|-------------------|-----------------|--|
| 1. | 3:11 | WVU | Michaela Abam (6) | Ashley Lawrence | Cross at right post, heads past GK |
| 2. | 30:11 | WVU | Sh'Nia Gordon (3) | Hannah Abraham | Cross at right post, buries it in near pocke |

Cautions and ejections:

Win-Rylee Foster (6-1-1). Loss-Martinson, Sara (7-3-1).

Stadium: Dick Dlesk Stadium

Officials: Referee: Jonathan Weiner; Asst. Referee: Devon Duling; Nick Vuchenich;

Alt. Official: Ron Dambrosia; Timekeeper: Chris Pharis; Scorer: Shannon McNamara;

Offsides: Baylor 1, West Virginia 2.

Official's signature

| Goals by period | 1 | 2 | Total |
|-----------------|---|---|-------|
| Baylor | 0 | 0 | 0 |
| West Virginia | 2 | 0 | 2 |

| Po # | Player | Sh | SO | G | A | Fo |
|-------------------|--------------------|----|----|---|---|----|
| gk 25 | Rylee Foster | - | - | - | - | - |
| d 4 | Bianca St. Georges | 1 | 1 | - | - | - |
| f 5 | Michaela Abam | 5 | 3 | 1 | - | - |
| f 6 | Heather Kaleiohi | 2 | - | - | - | - |
| m 9 | Ashley Lawrence | 2 | 1 | - | 1 | - |
| m 10 | Carla Portillo | 1 | - | - | - | - |
| d 11 | A. Pierre-Louis | - | - | - | - | - |
| d 16 | Easther Mayli Kith | 1 | - | - | - | - |
| m 22 | Alli Magaletta | 1 | - | - | - | - |
| d 88 | Kadeisha Buchanan | 3 | 1 | - | - | - |
| f 99 | Sh'Nia Gordon | 3 | 1 | 1 | - | - |
| -- Substitutes -- | | | | | | |
| 2 | Jade Gentile | - | - | - | - | - |
| 7 | Grace Cutler | - | - | - | - | - |
| 14 | Patricia Fernandez | - | - | - | - | - |
| 18 | Ashley Woolpert | - | - | - | - | - |
| 20 | Hannah Abraham | - | - | - | 1 | - |
| 24 | Carly Black | - | - | - | - | - |
| 26 | Vanessa Flores | 1 | - | - | - | - |
| Totals | | | | | | |

| # | Goalkeepers | Min | GA | Saves |
|----|--------------|-------|----|-------|
| 25 | Rylee Foster | 90:00 | 0 | 0 |

| Saves by period | 1 | 2 | Total |
|-----------------|---|---|-------|
| Baylor | 3 | 2 | 5 |
| West Virginia | 0 | 0 | 0 |

| Fouls | 1 | 2 | Total |
|---------------|---|---|-------|
| Baylor | 3 | 5 | 8 |
| West Virginia | 3 | 4 | 7 |

Soccer Box Score (Final) West Virginia University Women's Soccer #23 Oklahoma vs #3 West Virginia (Oct 02, 2016 at Morgantown, W.Va.)

Oklahoma (10-3-1, 3-1) vs.
West Virginia (10-1-1, 2-0)
Date: Oct 02, 2016 • Attendance: 1973
Weather: Low 70s, Mostly Cloudy

| Po # | Player | Sh | SO | G | A | Fo |
|-------------------|---------------------|----|----|---|---|----|
| gk 34 | Stade, Kassidie | - | - | - | - | - |
| m 4 | Price, Shiloh | 3 | 2 | - | - | - |
| m 5 | O'Donnell, Kristina | - | - | - | - | - |
| d 6 | Brem, Madeline | - | - | - | - | - |
| m 11 | Saliba, Madison | 2 | - | - | - | - |
| m 12 | Bowman, Tori | 1 | - | - | - | - |
| d 14 | Ressler, Rachel | - | - | - | - | - |
| f 16 | Keester, Liz | 2 | - | - | - | - |
| m 18 | Lualin, Lizzie | - | - | - | - | - |
| m 21 | Cota, Jemma | 1 | - | - | - | - |
| d 27 | Welch, Paige | - | - | - | - | - |
| -- Substitutes -- | | | | | | |
| 8 | Escobedo, Kyle | - | - | - | - | - |
| 10 | Roberts, Rasha | - | - | - | - | - |
| 26 | Boyle, Angela | - | - | - | - | - |
| 30 | Block, Bethany | - | - | - | - | - |
| Totals | | | | | | |

| # | Goalkeepers | Min | GA | Saves |
|----|-----------------|-------|----|-------|
| 34 | Stade, Kassidie | 90:00 | 2 | |

2016 Box Scores

Soccer Box Score (Final)
West Virginia University Women's Soccer
#3 West Virginia vs Kansas (Oct 07, 2016 at Lawrence, Kan.)

West Virginia (11-1-1, 3-0 Big 12) vs.
 Kansas (8-4-2, 3-1 Big 12)
 Date: Oct 07, 2016 • Attendance: 1400
 Weather: Clear, 58F, Wind 2mph

| Goals by period | 1 | 2 | Total |
|-----------------|---|---|-------|
| West Virginia | 1 | 0 | 1 |
| Kansas | 0 | 0 | 0 |

West Virginia

| Po # | Player | Sh | SO | G | A | Fo |
|-------------------|----------------------|----|----|---|---|----|
| gk | 25 Rylee Foster | - | - | - | - | - |
| d | 4 Bianca St. Georges | 1 | - | - | - | - |
| f | 5 Michaela Abam | 4 | 1 | - | - | - |
| f | 6 Heather Kalelohi | 1 | 1 | - | - | - |
| m | 9 Ashley Lawrence | 2 | - | - | 1 | - |
| m | 10 Carla Portillo | 1 | - | - | - | - |
| d | 11 A. Pierre-Louis | 2 | - | - | - | - |
| d | 16 Easther Mayi Kith | - | - | - | - | - |
| m | 22 Alli Magaletta | 2 | 1 | 1 | - | - |
| d | 88 Kadeisha Buchanan | 2 | - | - | - | - |
| f | 99 Sh'Nia Gordon | 2 | - | - | - | - |
| -- Substitutes -- | | | | | | |
| | 7 Grace Cutler | - | - | - | - | - |
| | 20 Hannah Abraham | 1 | - | - | - | - |
| | 24 Carly Black | - | - | - | - | - |
| | 26 Vanessa Flores | - | - | - | - | - |
| Totals | | 18 | 4 | 1 | 1 | 7 |

Kansas

| Po # | Player | Sh | SO | G | A | Fo |
|-------------------|-----------------------|----|----|---|---|----|
| gk | 00 Dobyms, Maddie | - | - | - | - | - |
| f | 2 Heuchan, Lois | 2 | - | - | - | - |
| d | 3 Gagnet, Aurelie | - | - | - | - | - |
| m | 5 Estrada, Tayler | - | - | - | - | - |
| f | 12 McClure, Katie | 2 | 2 | - | - | - |
| d | 15 Williams, Morgan | - | - | - | - | - |
| m | 18 Georgoulis, Jackie | - | - | - | - | - |
| d | 20 Morrison, Kayla | - | - | - | - | - |
| m | 23 Kallmaier, Hanna | - | - | - | - | - |
| f | 25 Hagan, Grace | 1 | - | - | - | - |
| d | 26 Merrick, Addisyn | - | - | - | - | - |
| -- Substitutes -- | | | | | | |
| | 7 Pankey, Ashley | - | - | - | - | - |
| | 8 Courtney, Anna | - | - | - | - | - |
| | 10 Melugin, Miriam | - | - | - | - | - |
| | 19 Eliasdottir, Eva | - | - | - | - | - |
| | 27 Maierhofer, Sophie | - | - | - | - | - |
| Totals | | 5 | 2 | 0 | 0 | 7 |

| # | Goalkeepers | Min | GA | Saves |
|----|--------------|-------|----|-------|
| 25 | Rylee Foster | 90:00 | 0 | 2 |

| # | Goalkeepers | Min | GA | Saves |
|----|----------------|-------|----|-------|
| 00 | Dobyms, Maddie | 90:00 | 1 | 3 |

Shots by period

| | 1 | 2 | Total |
|---------------|----|---|-------|
| West Virginia | 12 | 6 | 18 |
| Kansas | 3 | 2 | 5 |

Saves by period

| | 1 | 2 | Total |
|---------------|---|---|-------|
| West Virginia | 1 | 1 | 2 |
| Kansas | 2 | 1 | 3 |

Corner kicks

| | 1 | 2 | Total |
|---------------|----|---|-------|
| West Virginia | 11 | 3 | 14 |
| Kansas | 0 | 0 | 0 |

Fouls

| | 1 | 2 | Total |
|---------------|---|---|-------|
| West Virginia | 1 | 6 | 7 |
| Kansas | 2 | 5 | 7 |

Scoring summary:

| No. | Time | Team | Goal scorer | Assist | Description |
|-----|-------|------|--------------------|-----------------|-------------|
| 1. | 37:57 | WVU | Alli Magaletta (2) | Ashley Lawrence | off corner |

Cautions and ejections:

Win-Rylee Foster (8-1-1). Loss-Dobyms, Maddie (8-3-1).

Stadium: Rock Chalk Park

Officials: Referee: Timothy Debysingh; Asst. Referee: Jeff Crank; Brian Martin;

Alt. Official: Aaron Wrench; Timekeeper: Becca Strecker; Scorer: Brad Gilbert;

Offsides: West Virginia 1, Kansas 2.

Official's signature

West Virginia University Women's Soccer
West Virginia Combined Team Statistics (as of Oct 07, 2016)
All games

| RECORD: | OVERALL | HOME | AWAY | NEUTRAL |
|----------------|----------------|-------------|-------------|----------------|
| ALL GAMES | 11-1-1 | 7-1 | 3-0-1 | 1-0 |
| CONFERENCE | 3-0 | 2-0 | 1-0 | 0-0 |
| NON-CONFERENCE | 8-1-1 | 5-1 | 2-0-1 | 1-0 |

| Date | Opponent | | Score | Att. | # | Player | gp | g | a | pts | sh | sh% | sog | sog% | gw | pk-att |
|-------------|------------------|-----|--------------|-------------|----------|-------------------|-----------|----------|----------|------------|-----------|------------|------------|-------------|-----------|---------------|
| Aug 19 | at #2 Penn State | To2 | 1-1 | 5791 | 5 | Michaela Abam | 13 | 7 | 2 | 16 | 60 | .117 | 29 | .483 | 2 | 1-1 |
| Aug 21 | vs Buffalo | w | 2-0 | 0 | 6 | Heather Kaleiohi | 11 | 4 | 1 | 9 | 28 | .143 | 14 | .500 | 2 | 0-0 |
| Aug 26 | #8 CLEMSON | w | 1-0 | 2019 | 99 | Sh'Nia Gordon | 13 | 3 | 2 | 8 | 44 | .068 | 12 | .273 | 0 | 0-0 |
| Aug 28 | SAINT FRANCIS | w | 3-1 | 682 | 20 | Hannah Abraham | 13 | 3 | 1 | 7 | 17 | .176 | 6 | .353 | 3 | 0-0 |
| Sep 1 | PURDUE | w | 2-0 | 1320 | 11 | A. Pierre-Louis | 13 | 2 | 3 | 7 | 28 | .071 | 10 | .357 | 1 | 0-0 |
| Sep 04 | #19 OHIO STATE | w | 2-1 | 1763 | 10 | Carla Portillo | 13 | 1 | 5 | 7 | 9 | .111 | 2 | .222 | 0 | 0-0 |
| Sep 09 | at #6/6 Duke | w | 3-1 | 1860 | 22 | Alli Magaletta | 13 | 2 | 2 | 6 | 15 | .133 | 4 | .267 | 2 | 0-0 |
| Sep 16 | PRINCETON | w | 3-0 | 1946 | 9 | Ashley Lawrence | 11 | 1 | 4 | 6 | 21 | .048 | 8 | .381 | 0 | 1-1 |
| Sep 18 | #9 GEORGETOWN | Lo2 | 0-1 | 1402 | 7 | Grace Cutler | 13 | 1 | 0 | 2 | 18 | .056 | 8 | .444 | 0 | 0-0 |
| Sep 23 | at Richmond | w | 4-1 | 647 | 88 | Kadeisha Buchanan | 11 | 1 | 0 | 2 | 17 | .059 | 5 | .294 | 1 | 0-1 |
| * Sep 30 | BAYLOR | w | 2-0 | 1374 | 2 | Jade Gentile | 8 | 1 | 0 | 2 | 5 | .200 | 4 | .800 | 0 | 0-0 |
| * Oct 02 | #23 OKLAHOMA | w | 2-0 | 1973 | 18 | Ashley Woolpert | 12 | 0 | 2 | 2 | 3 | .000 | 2 | .667 | 0 | 0-0 |
| * Oct 07 | at Kansas | w | 1-0 | 1400 | 26 | Vanessa Flores | 12 | 0 | 1 | 1 | 8 | .000 | 1 | .125 | 0 | 0-0 |

| TEAM STATISTICS | WVU | OPP |
|------------------------|------------|------------|
| SHOT STATISTICS | | |
| Goals-Shot attempts | 26-286 | 6-88 |
| Goals scored per game | 2.00 | 0.46 |
| Shot pct. | .091 | .068 |
| Shots on goal-Attempts | 112-286 | 39-88 |
| SOG pct. | .392 | .443 |
| Shots/Game | 22.0 | 6.8 |
| CORNER KICKS | 100 | 29 |
| PENALTY KICKS | 2-3 | 1-1 |
| PENALTIES | | |
| Yellow cards | 5 | 8 |
| Red cards | 0 | 0 |
| ATTENDANCE | | |
| Total | 12479 | 9698 |
| Dates/Avg Per Date | 8/1560 | 4/2424 |
| Neutral Site #/Avg | 1/0 | |

| | | | | | | | | | | | |
|------------------|--------------------|----|----|----|----|-----|------|-----|------|----|-----|
| 97 | Dalanda Ouendeno | 4 | 0 | 1 | 1 | 2 | .000 | 1 | .500 | 0 | 0-0 |
| 24 | Carly Black | 9 | 0 | 1 | 1 | 2 | .000 | 1 | .500 | 0 | 0-0 |
| 14 | Patricia Fernandez | 7 | 0 | 0 | 0 | 2 | .000 | 1 | .500 | 0 | 0-0 |
| 16 | Easther Mayi Kith | 13 | 0 | 0 | 0 | 1 | .000 | 0 | .000 | 0 | 0-0 |
| 25 | Rylee Foster | 10 | 0 | 0 | 0 | 0 | .000 | 0 | .000 | 0 | 0-0 |
| 19 | Laurel Carpenter | 1 | 0 | 0 | 0 | 0 | .000 | 0 | .000 | 0 | 0-0 |
| 13 | Amanda Saymon | 3 | 0 | 0 | 0 | 0 | .000 | 0 | .000 | 0 | 0-0 |
| 12 | Macy Stalnaker | 4 | 0 | 0 | 0 | 0 | .000 | 0 | .000 | 0 | 0-0 |
| 1 | Michelle Newhouse | 4 | 0 | 0 | 0 | 0 | .000 | 0 | .000 | 0 | 0-0 |
| Total | | 13 | 26 | 26 | 78 | 286 | .091 | 112 | .392 | 11 | 2-3 |
| Opponents | | 13 | 6 | 2 | 14 | 88 | .068 | 39 | .443 | 1 | 1-1 |

| # | Goalie | GP | Min. | GA | GAAvg | Saves | Pct | W-L-T | Sho |
|------------------|-------------------|-----------|-------------|-----------|--------------|--------------|------------|--------------|------------|
| 25 | Rylee Foster | 10 | 914:07 | 4 | 0.39 | 24 | .857 | 8-1-1 | 5/1 |
| 1 | Michelle Newhouse | 4 | 287:31 | 2 | 0.63 | 8 | .800 | 3-0-0 | 1/1 |
| Total | | 13 | 1201:38 | 6 | 0.45 | 33 | .846 | 11-1-1 | 7 |
| Opponents | | 13 | 1201:38 | 26 | 1.95 | 86 | .768 | 1-11-1 | 1 |

| Goals by Period | 1st | 2nd | OT | OT2 | Total |
|------------------------|------------|------------|-----------|------------|--------------|
| West Virginia | 10 | 16 | 0 | 0 | 26 |
| Opponents | 1 | 4 | 0 | 1 | 6 |

| Shots by Period | 1st | 2nd | OT | OT2 | Total |
|------------------------|------------|------------|-----------|------------|--------------|
| West Virginia | 142 | 138 | 5 | 1 | 286 |
| Opponents | 34 | 46 | 4 | 4 | 88 |

| Saves by Period | 1st | 2nd | OT | OT2 | Total |
|------------------------|------------|------------|-----------|------------|--------------|
| West Virginia | 15 | 15 | 3 | 0 | 33 |
| Opponents | 50 | 36 | 0 | 0 | 86 |

| Corners by Period | 1st | 2nd | OT | OT2 | Total |
|--------------------------|------------|------------|-----------|------------|--------------|
| West Virginia | 60 | 37 | 1 | 2 | 100 |
| Opponents | 10 | 18 | 0 | 1 | 29 |

| Fouls by Period | 1st | 2nd | OT | OT2 | Total |
|------------------------|------------|------------|-----------|------------|--------------|
| West Virginia | 49 | 70 | 2 | 1 | 122 |
| Opponents | 45 | 57 | 3 | 3 | 108 |

Mountaineer Photo Roster



Michelle Newhouse
5-8 | Jr. | GK



Jade Gentile
5-4 | Fr. | M/F



Brooke Myers
5-11 | Fr. | GK



Bianca St. Georges
5-5 | So. | D



Michaela Abam
5-7 | Jr. | F



Heather Kaleiohi
5-7 | Jr. | F



Grace Cutler
5-9 | So. | F



Ashley Lawrence
5-6 | Sr. | M



Carla Portillo
5-1 | Jr. | M



Amandine Pierre-Louis
5-7 | Jr. | D



Macy Stalnaker
5-4 | So. | F/M



Amanda Saymon
5-5 | So. | M



Patricia Fernandez
5-0 | So. | M



Easter Mayi Kith
5-6 | So. | D



Ashley Woolpert
5-7 | Sr. | F/M



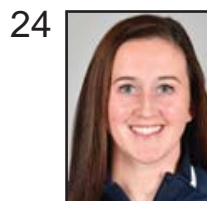
Laurel Carpenter
5-9 | So. | M



Hannah Abraham
5-5 | So. | F/D



Alli Magaletta
5-6 | Jr. | M



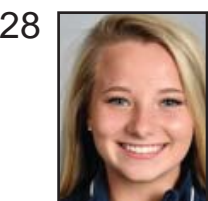
Carly Black
5-8 | Sr. | D



Rylee Foster
5-9 | Fr. | GK



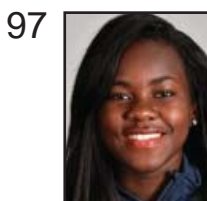
Vanessa Flores
5-7 | So. | M



Amanda Burns
5-0 | Fr. | M



Kadeisha Buchanan
5-7 | Sr. | D



Dalanda Ouedeno
5-5 | So. | D



Sh'Nia Gordon
5-7 | So. | F



Head Coach
Nikki Izzo-Brown
21st Season



Associate Head Coach
Lisa Stoia
10th Season



Assistant Coach
Marisa Kanela
Seventh Season



Volunteer Assistant
Zach Johnson
Sixth Season



Graduate Assistant
Hannah Steadman
First Season